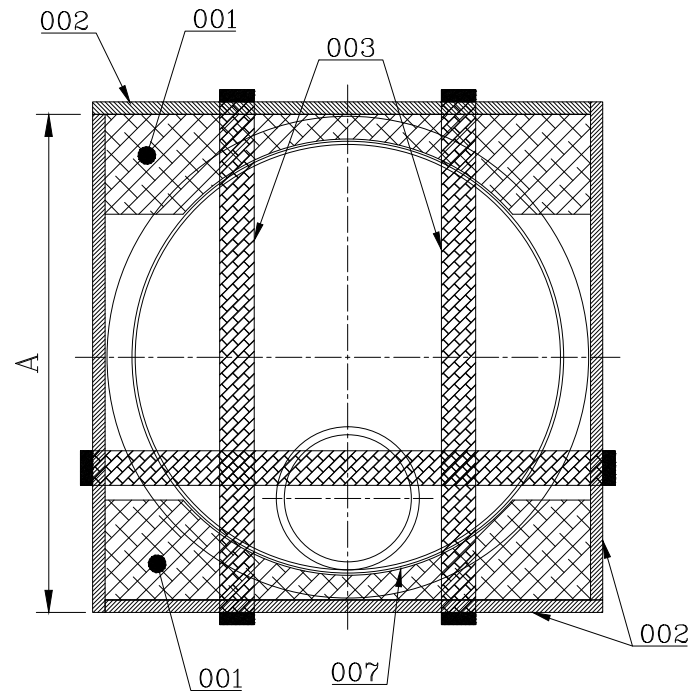
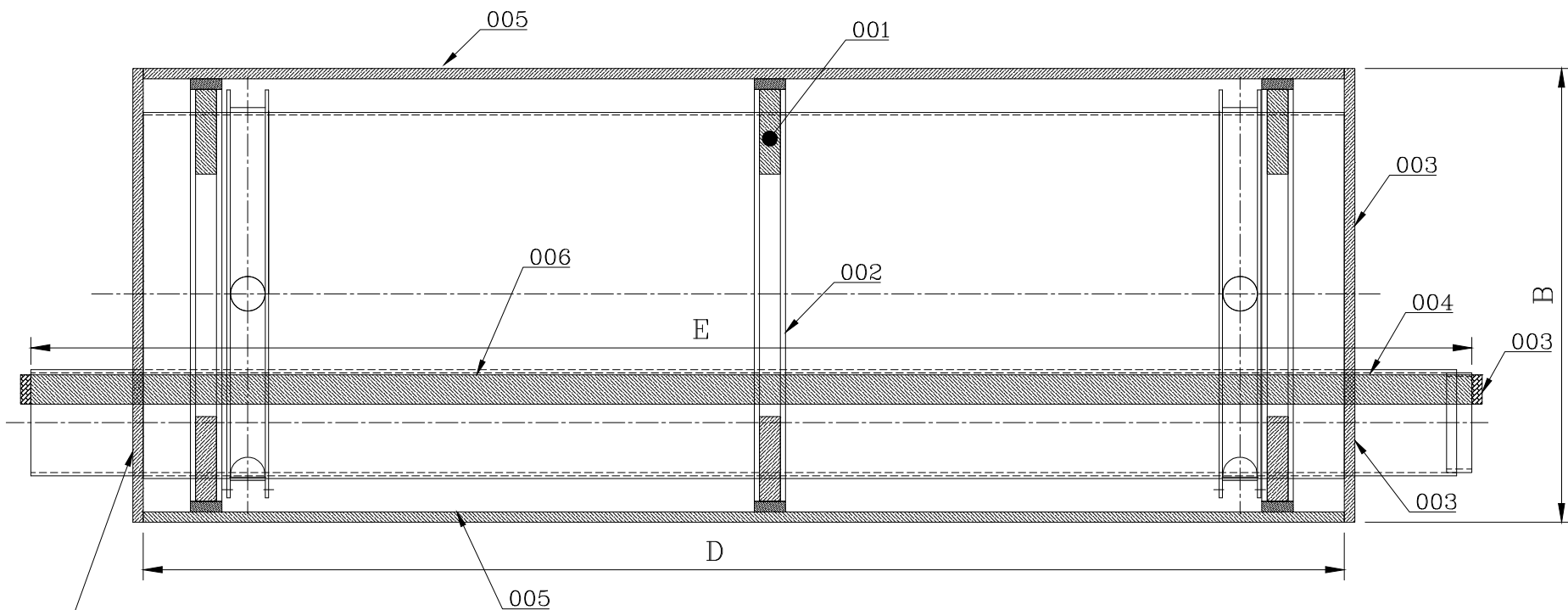


COPYRIGHT & CONFIDENTIAL THE INFORMATION ON THIS DOCUMENT IS THE PROPERTY OF BHARAT HEAVY ELECTRICALS LIMITED. IT MUST NOT BE USED DIRECTLY OR INDIRECTLY IN ANY DETERIMENTAL TO THE INTREST OF THE COMPANY.

FIRST ANGLE PROJECTION

ALL DIMENSSIONS IN MILLIMETER

900-006
PACKING
DRAWING NO.





NOTES:-

1. ALL BATTEN CORNER JOINTS WILL BE DONE WITH 1TKx75x150 LG STEEL STRIP.
2. BOTH SIDE END SECTION COVERED WITH 0.1TK TRANSPARENT POLYTHENE SHEET.
3. USE 6TKx75xL LG. FELT GASKET INSIDE CURVED WOODEN PLANK.
4. USE GOOD QUALITY WOOD BASED ON EASY AVAILABILITY AND STRENGTH FOR PACKING.
5. QTY. OF ITEM-001 & 002 MAY BE CHANGE AS PER BUSDUCT LENGTH, SHAPE & SIZE.
6. JOINTS IN THE LENGTH OF RUNNING BATTEN TO BE MADE ONLY AT ENDS AND OVER THE CURVED PIECES. NO JOINT IN BETWEEN IS ALLOWED.
7. MAX. DISTANCE BETWEEN CURVED WOODEN PLANK NOT MORE THAN 2500 mm.
8. CURVED PIECES SHOULD PREFERABLY BE KEPT CLOSE TO CHANNEL RING.

VAR.00

AS REQD.		010	TRANSPARENT POLYTHENE SHEET					
AS REQD.		009	STEEL NAIL					
AS REQD.		008	STEEL STRIP 1TKx75x150 LG.					
AS REQD.		007	FELT GASKET					
002		006	WOODEN BATTEN 25TKx75xE LG.					
004		005	WOODEN BATTEN 25TKx75xD LG.					
		004						
006		003	WOODEN BATTEN 25TKx75xB LG.					
012		002	WOODEN BATTEN 25TKx75xA LG.					
006		001	CURVED WOODEN PLANK	41590923001				
VAR 00	REMARKS	ITEM NO.	DESCRIPTION	DRAWING NO.	IT.NO. VAR.	MATL.CODE MATL.SPCN.	WT. QTY.	00

CUSTOMER		PROJECT/PRODUCT								
	BHARAT HEAVY ELECTRICALS LIMITED RUDRAPUR						NAME	SIGN.	DATE	NO. OF VAR.
						DRN.	SANJAY		—	
						CKD.	R K LAL		—	
						APPD.	R K LAL		—	
DEPTT. BDE	UNTOL.DIM.GR. C/M/F		SCALE —	WEIGHT—KG —	REF.TO ASSY.DRG. —			IT.NO. —	NO.OF ITEM	
TITLE WOODEN PACKING DETAIL W.A. OF IP BUSDUCT					DRAWING NO. PACKING—006				REV. 00	
			SHEET NO.— 01		NO.OF SHEETS— 01			SIZE— A3		