

F

E

D

C

B

A

F

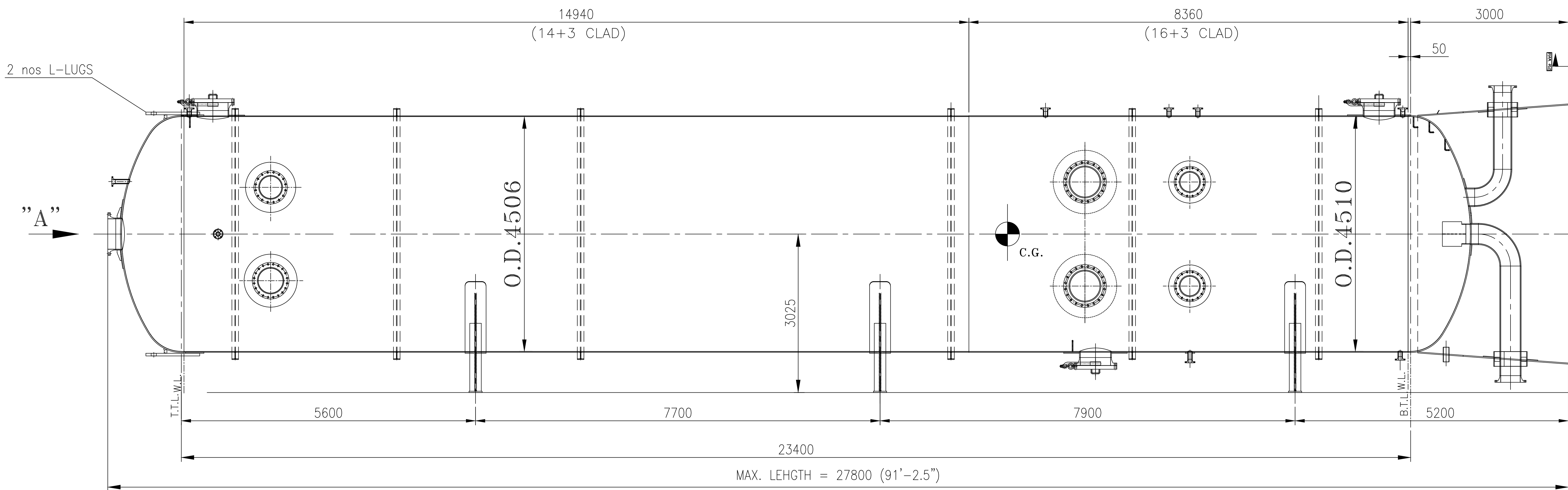
E

D

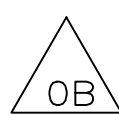
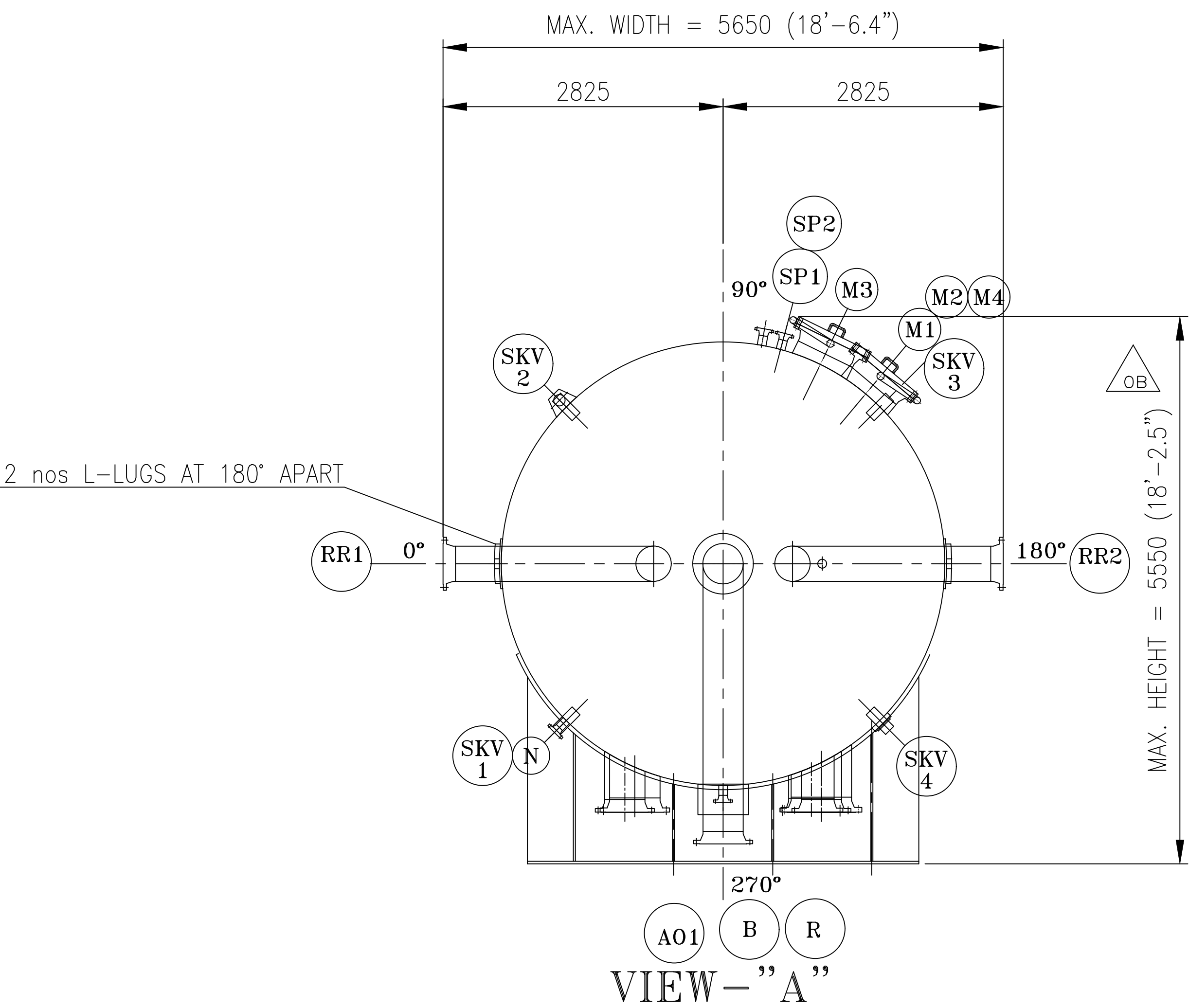
C

B

A



ELEVATION



MODE OF TRANSPORT : BY ROAD

OVERALL DIMENSIONS OF CONSIGNMENT






MAXIMUM LENGTH : 27800 ( 91'-5" )  
MAXIMUM WIDTH : 5650 ( 18'-6.4" )  
MAXIMUM HEIGHT : 5550 ( 18'-2.5" )  
APPROX. WT. : ~78500 Kg.

TO  
DESTINATION

M/s. GAS AUTHORITY OF INDIA LIMITED  
PATA

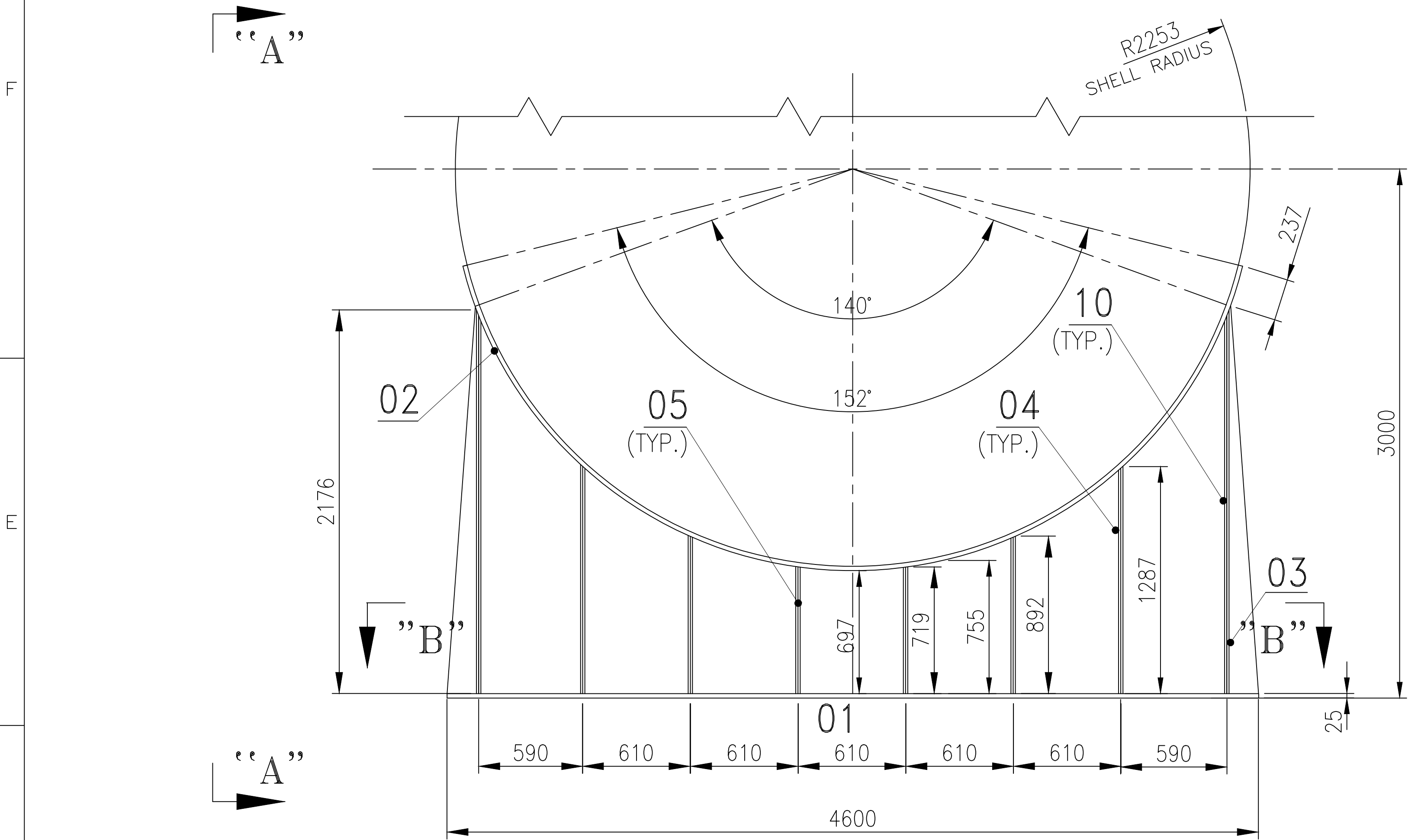
REF.DRG. No. E.I.L. DATA SHT. NO.  
1) B315-006-80-42-DS-3001

		REVISED OVERALL DIMENSIONS AS MARKED	GUR	LKM	SKB
REV.NO.	ZONE	BRIEF RECORD.	PPD.	CHD.	APPD.

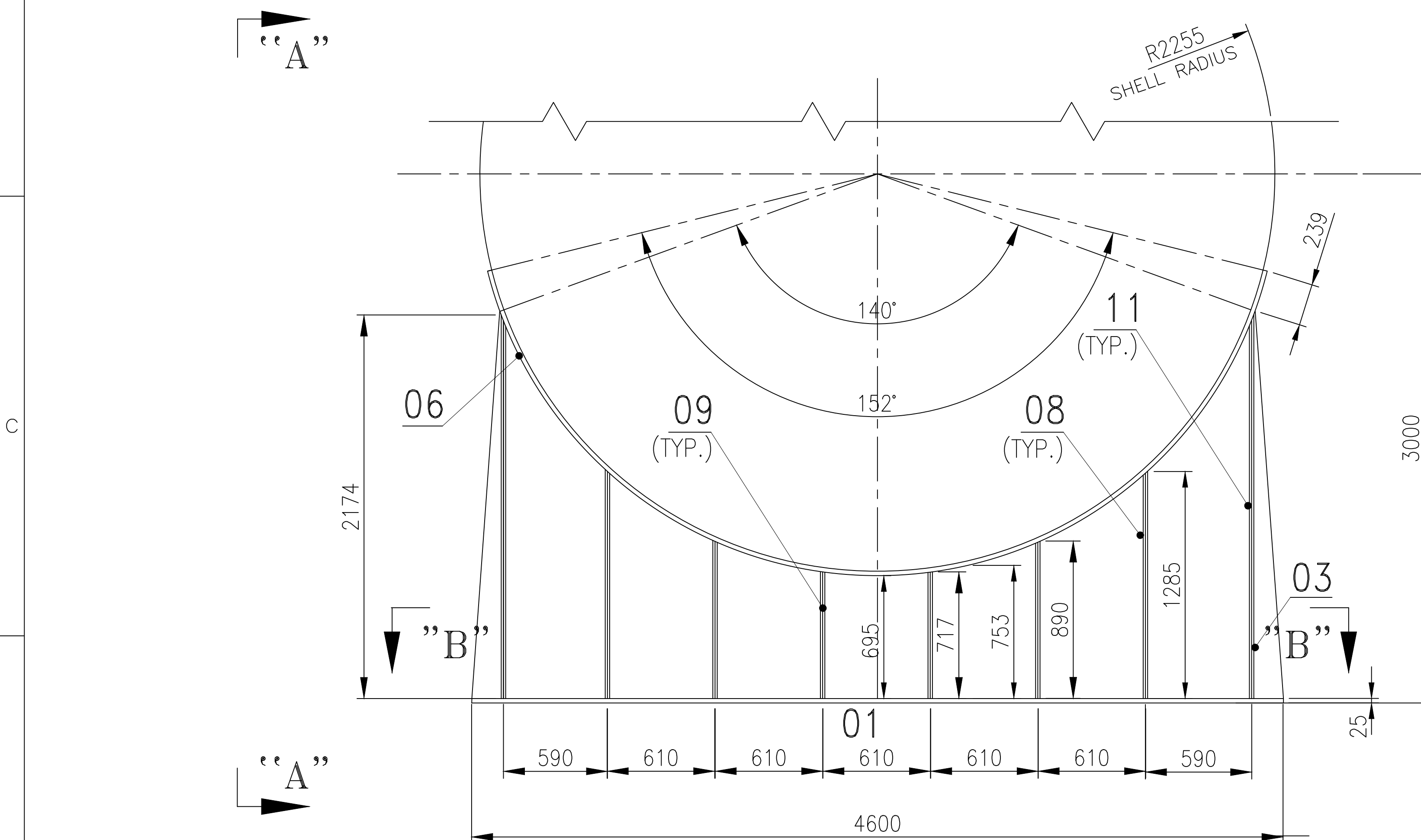
<div>OWNER</div> <div></div>		<div>GAS AUTHORITY OF INDIA LIMITED.</div> <div>PATA</div>	
<div>LICENSOR :</div> <div></div>		<div><div>इंजीनियर्स इंडिया लिमिटेड (भारत सरकार का उपक्रम)</div><div></div><div>ENGINEERS INDIA LIMITED (A Govt. of India Undertaking)</div></div> <div>E.I.L. JOB NO. B315, PR NO. B315-006-CC-PR-6010/0001</div>	
<div></div>		<div>Bharat Heavy Electricals Limited</div> <div>UNIT: HEAVY PLATES &amp; VESSELS PLANT</div> <div>VISAKHAPATNAM — 530 012 (A.P.)</div>	
DGN.	—	<div><div>GAS AUTHORITY OF INDIA LIMITED</div><div>PATA</div></div>	
PPD.	Sd/- YKM		
CHD.	Sd/- LKM	<div><div>TRANSPORTATION SKETCH FOR</div><div>REGENERATOR</div><div>( EIL ITEM NO. 06-CC-102 )</div></div>	
APPROVED.	Sd/- SKB		
SCALE.	N.T.S	<div><div>WORK ORDER NO. 2440</div><div>NO.1 OF SH 2</div><div>YEAR OF ORDER 2020</div><div>SIZE A2</div><div>DRAWING NO. 2-CL-010-U0047</div><div>REV.NO. 0B</div></div>	
ALL PROJECTIONS ARE FIRST ANGLE UNLESS OTHERWISE SPECIFIED			
			

FORM NO.0421/0

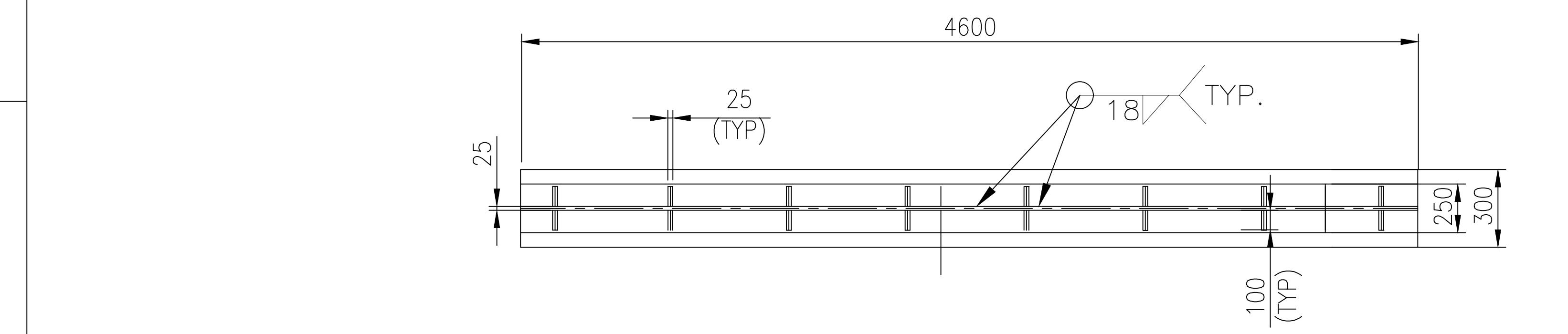




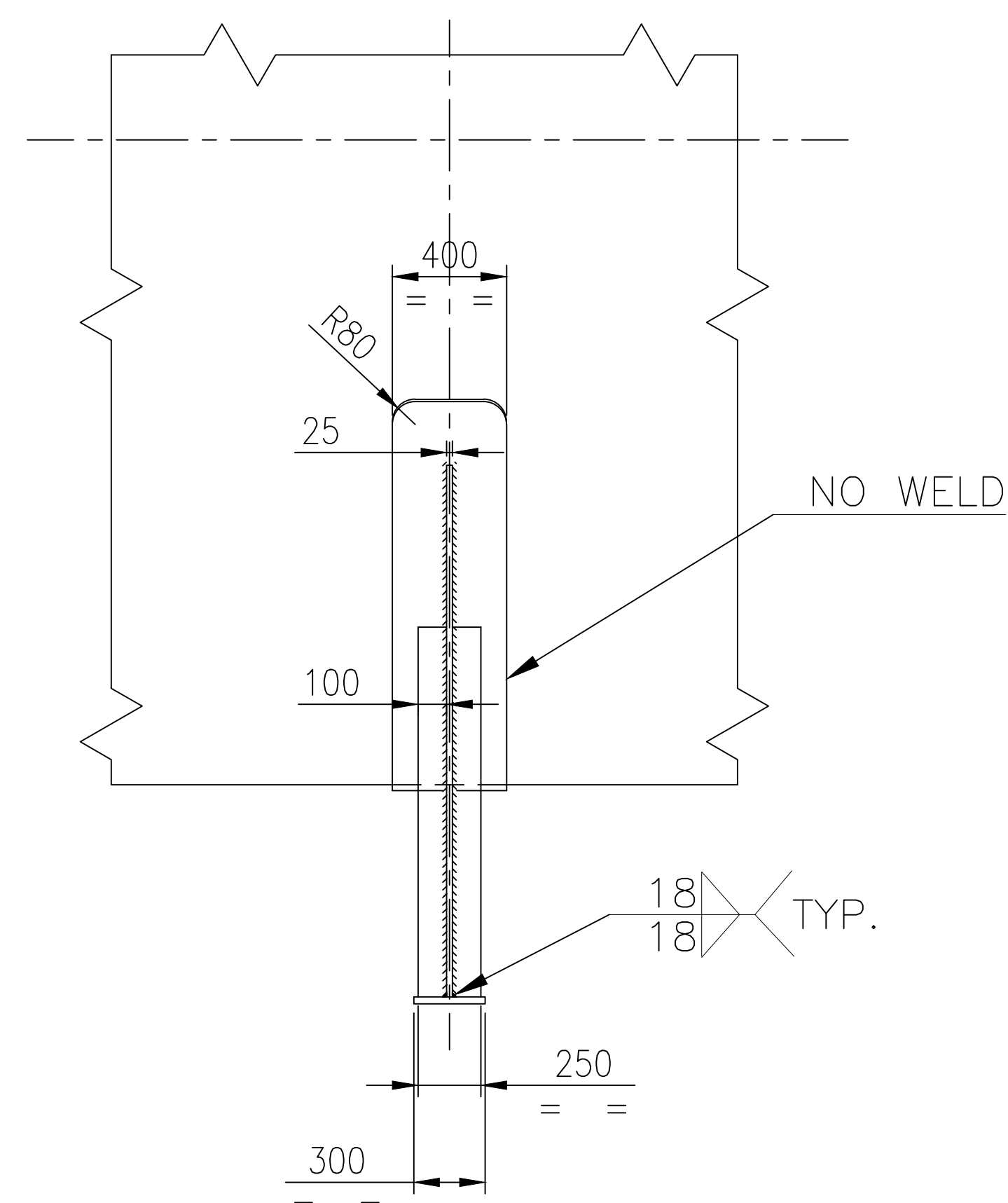
DETAIL OF SADDLE-1 (ON SHELL)



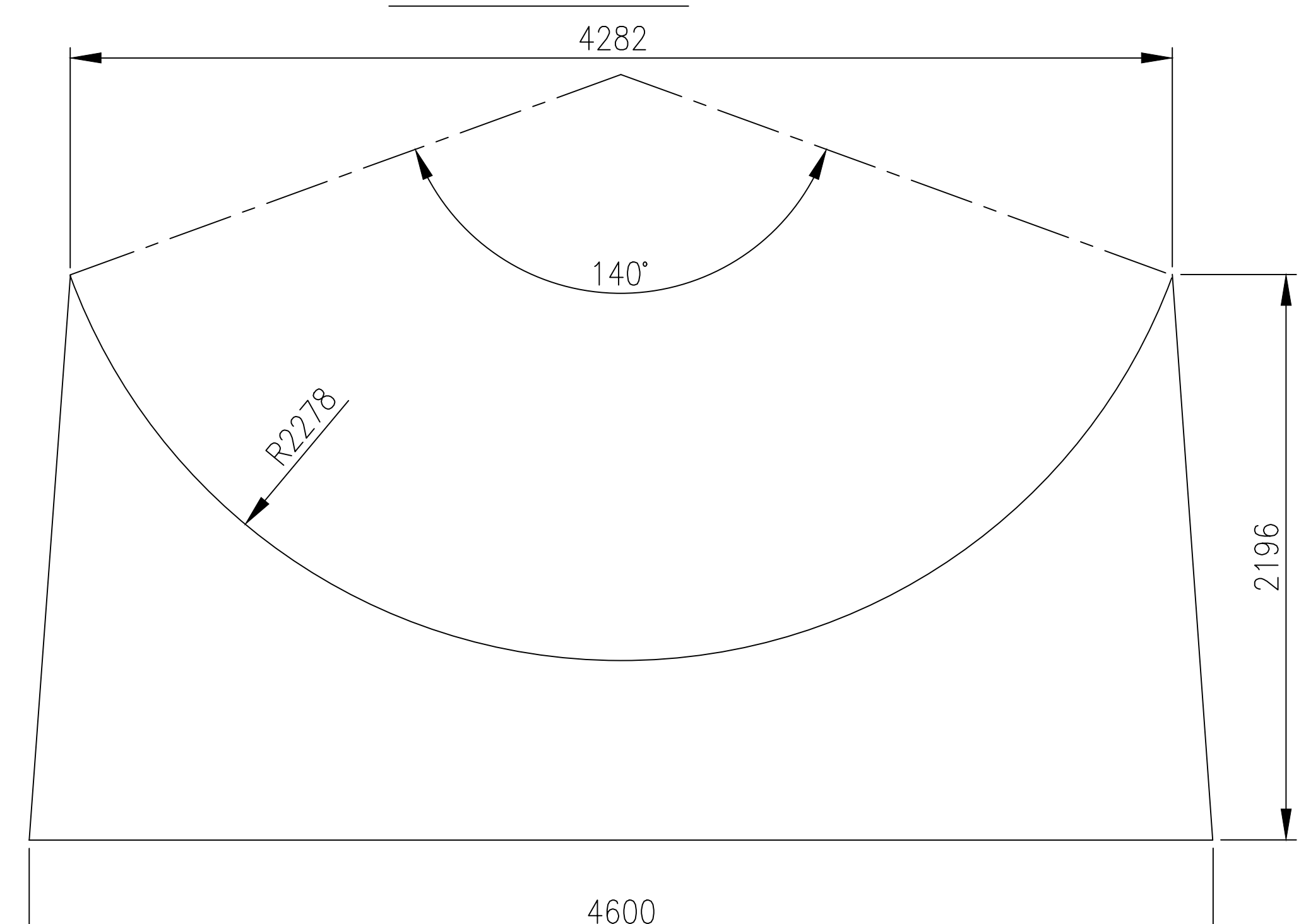
DETAIL OF SADDLE-2 (ON SHELL)



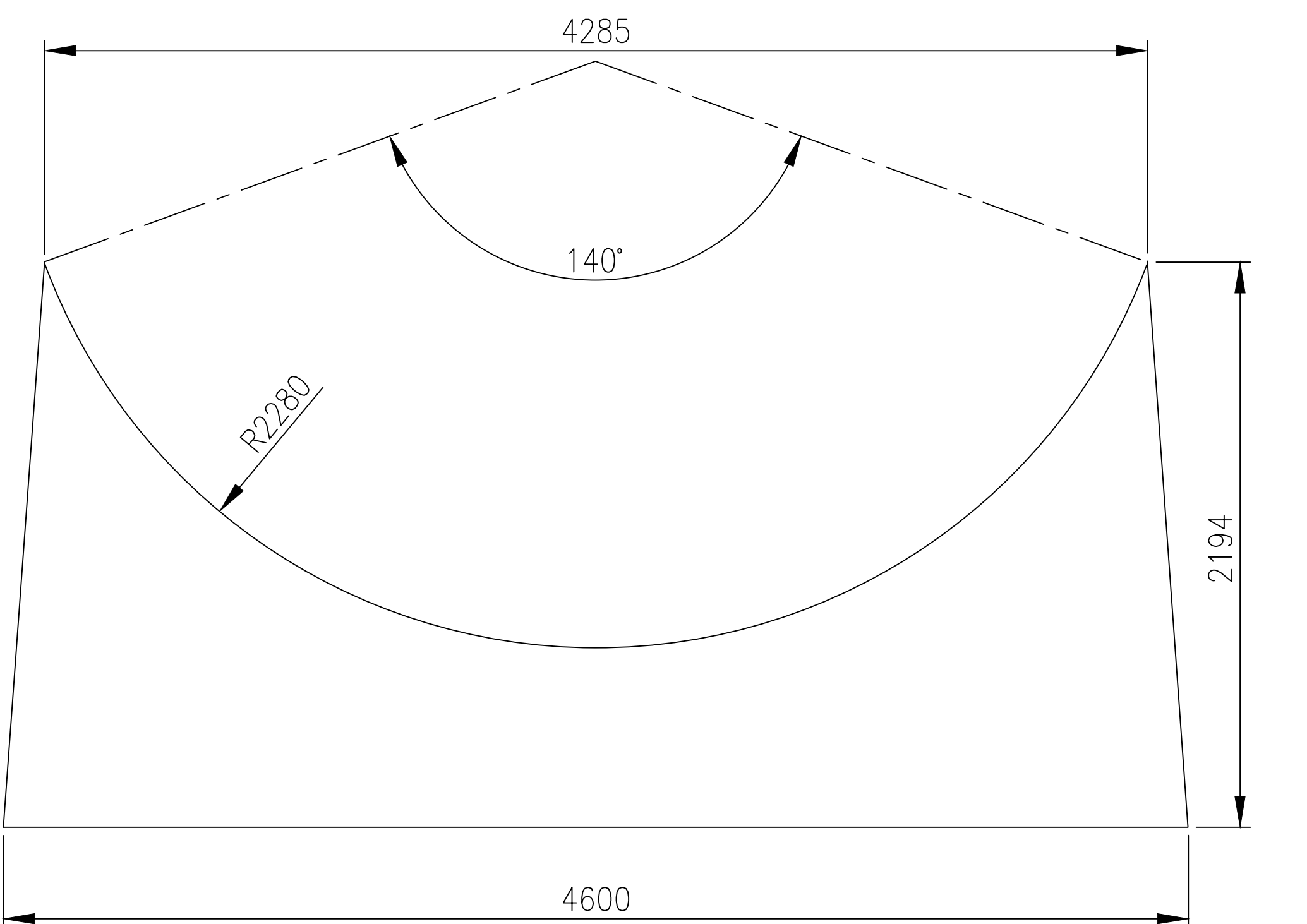
SECTION - BB  
DETAIL OF BASE PLATE



VIEW A-A




FOR ITEM No.-03




FOR ITEM No.-07


TOTAL WEIGHT = 9014.5 Kgs.

VARIANT NUMBER	ITEM NUMBER	DESCRIPTION	STD	DRAWING NUMBER	ITEM-NO VAR-NO	MATERIAL CODE	MATERIAL SPECN	A/C/P UNIT	UNIT WEIGHT	QUANTITY
	11	RIB 25 THK. x 100 x 2174 (APD)				IS 2062 Gr. A/B			42.6	4
	10	RIB 25 THK. x 100 x 2176 (APD)				IS 2062 Gr. A/B			42.9	4
	09	RIB 25 THK. x 100 x 717 (APD)				IS 2062 Gr. A/B			14.2	4
	08	RIB 25 THK. x 100 x 1285 (APD)				IS 2062 Gr. A/B			25.2	4
	07	WEB PLATE 25 THK. x 2194x 4600 (APD)				IS 2062 Gr. A/B			1980.2	1
	06	WEAR PLATE 25 THK. x 400 x DEV. Lg. 6015 (APD)				IS 2062 Gr. A/B			472.15	1
	05	RIB 25 THK. x 100 x 892 (APD)				IS 2062 Gr. A/B			17.5	8
	04	RIB 25 THK. x 100 x 1287 (APD)				IS 2062 Gr. A/B			25.25	8
	03	WEB PLATE 25 THK. x 2196 x 4600 (APD)				IS 2062 Gr. A/B			1982	2
	02	WEAR PLATE 25 THK. x 400 x DEV. Lg. 6010 (APD)				IS 2062 Gr. A/B			471.7	2
	01	BASE PLATE 25 THK. x 300 x 4600				IS 2062 Gr. A/B			271	3

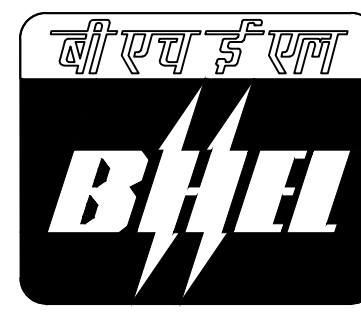
**GAS AUTHORITY OF INDIA LIMITED.**  
PATA

LICENSOR :

**इंजीनियर्स  
इंडिया लिमिटेड**  
(भारत सरकार का उपक्रम)

**ENGINEERS  
INDIA LIMITED**  
(A Govt. of India Undertaking)

E.I.L. JOB NO. B315, PR NO. B315-006-CC-PR-6010/0001

**Bharat Heavy Electricals Limited**  
UNIT: HEAVY PLATES & VESSELS PLANT  
VISAKHAPATNAM - 530 012 (A.P.)

DGN. -

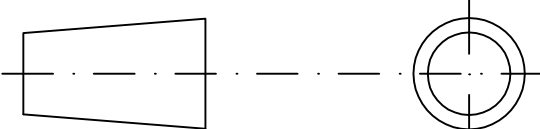
PPD. Sd/- YKM

CHD. Sd/- LKM

APPROVED. Sd/- SKB

SCALE. N.T.S

ALL PROJECTIONS ARE FIRST ANGLE UNLESS OTHERWISE SPECIFIED



**GAS AUTHORITY OF INDIA LIMITED**  
PATA

**TRANSPORTATION SKETCH FOR  
REGENERATOR**  
( EIL ITEM NO. 06-CC-102 )

WORK ORDER NO. 2440

NO. 2 OF SH 2

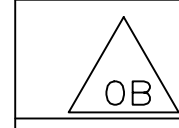
YEAR OF ORDER 2020

SIZE A2

DRAWING NO. 2-CL-010-U0047

REV.NO. 0

REF.DRG. No. E.I.L. DATA SHT. NO.  
1) B315-006-80-42-DS-3001

		REVISED OVERALL DIMENSIONS AS MARKED	GUR	LKM	SKB
REV.NO.	ZONE	BRIEF RECORD.	PPD.	CHD.	APPD.

FORM NO.0421/0