



429 - 006

MATERIALS MANAGEMENT / RM
CAPITAL PURCHASE/CP & SP
BHEL TRICHY -620014

Enquiry Corrigendum-1

NIT – 22744

Enquiry No. 2661500188 dated 30.05.2015

Item Description: "Ball screw rod for CNC machine"

Details of Corrigendum:

*Nine Drawings uploaded.

All other terms & conditions as published in the above NIT No. remain unaltered.

NOTE:

Confirmation of acceptance for BHEL Commercial terms & conditions & Price Bids formats have been posted in BHEL corporate website www.bhel.com or from the government tender website <http://tenders.gov.in> (public sector→Bharat Heavy Electricals Limited page) under Enquiry reference "2661500188"

FOR BHEL TRICHY:

SM/CP&SP

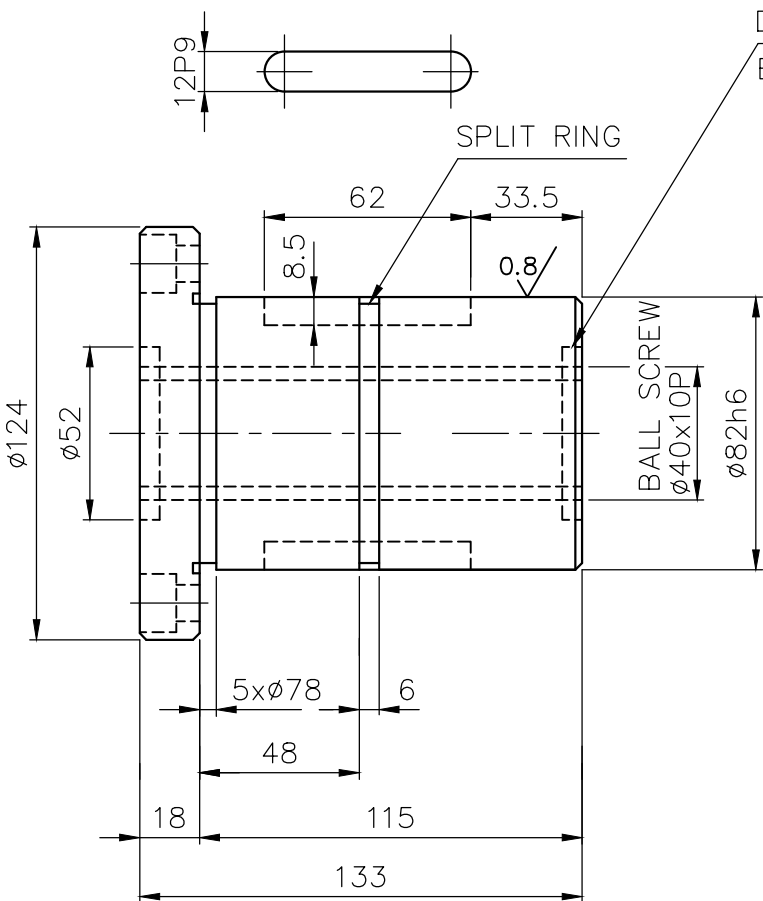
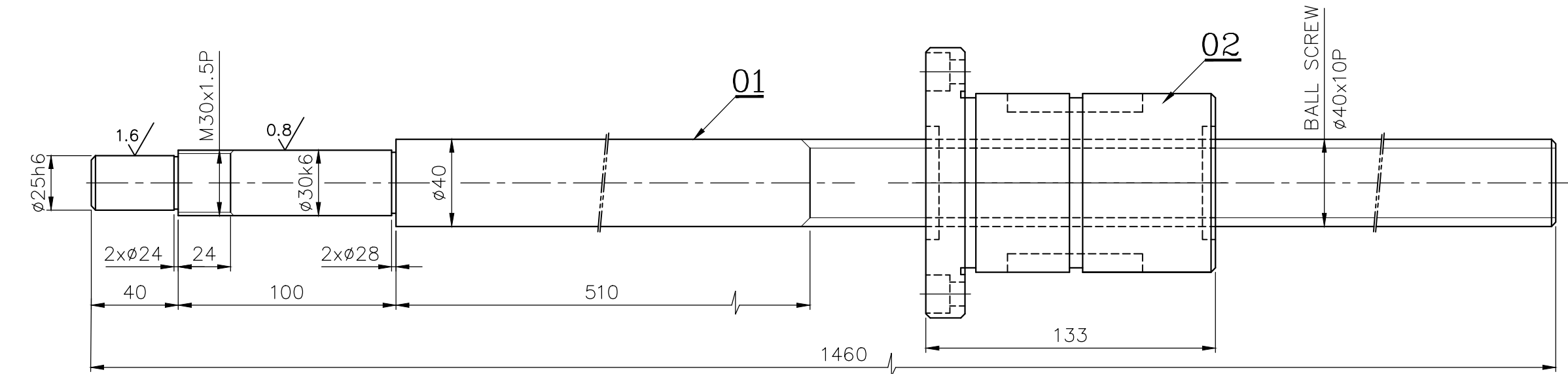
V. CHELLIAH
Sr Manager / Purchase
MM / RM / CP & SP
BHEL, TRICHY - 620 014.

CAUTION: THIS DRAWING IS OUR SOLE PROPERTY AND SHOULD NOT BE USED IN ANY FORM FOR ANY PURPOSE WITHOUT THE WRITTEN PERMISSION OF BHARAT HEAVY ELECTRICALS LIMITED TRICHIRAPPALLI - 620 014.

ALL DIMENSIONS ARE IN MM

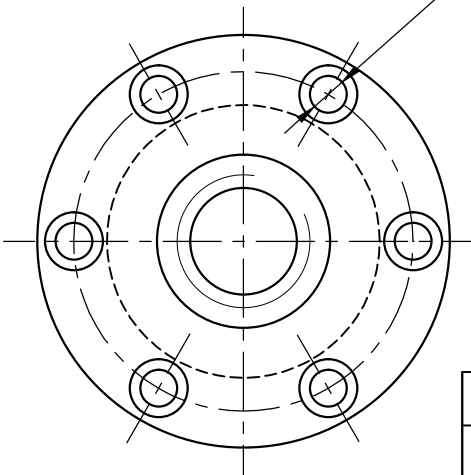
ø25h6	-0.000	ø30k6	+0.015	12P9	-0.018	
	-0.013		+0.002		-0.061	
					-0.000	
					-0.022	

1.6/0.8/



DUST PRODUCT COVER
BOTH SIDES WITH LOCKING SCREW

6 HOLES ø11 CBR17.5-11 DEEP
ON PCD 102



BALL SCREW DESIGNATION: -

BALL SCREW ISO-3408-XXX-XXX-01330-POIR

NOMINAL DIA LEAD - AS PER DRAWING STD

ACCURACY GRADE: 01

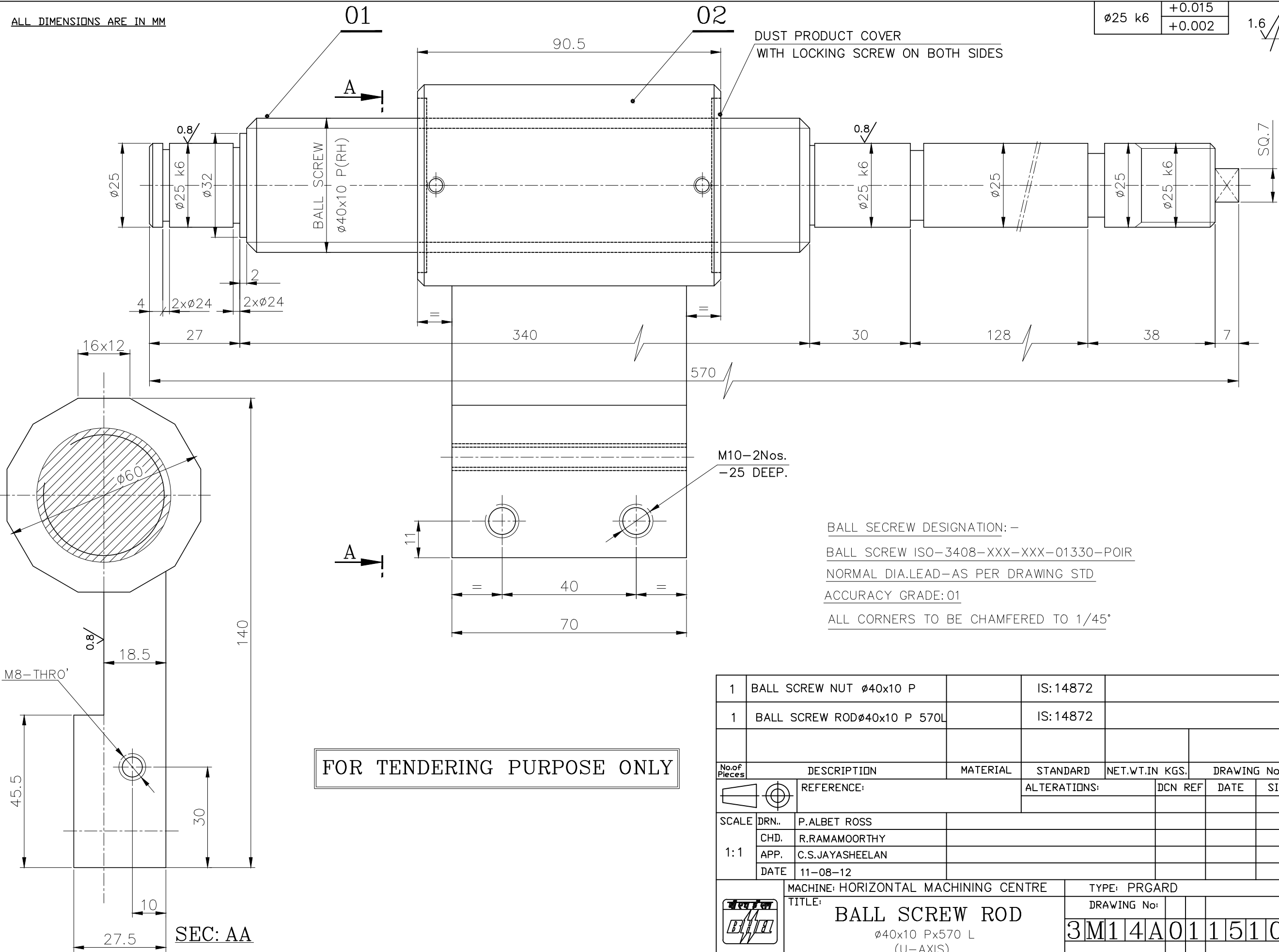
ALL CORNERS TO BE CHAMFERED 1/45°

1	BALL SCREW NUT ø40x10Px133L		IS:14872			02
1	BALL SCREW ROD ø40x10Px1460L		IS:14872			01
No. of Pieces	DESCRIPTION	MATERIAL	STANDARD	NET.WT.IN KGS.	DRAWING No.	ITEM No.
	REFERENCE:		ALTERATIONS:	DCN REF	DATE	SIGN.
SCALE	DRAWN	S.Selvamanickam				
	CHECKED	R.RAMAMOORTHY				
1:2	APPROVED	C.S.JAYASHEELAN				
	DATE	03.11.11'				
MACHINE: VERTICAL MACHINING CENTER			TYPE: PAL-VA-50			
TITLE: BALL SCREW ROD ASSY. ø40x10Px1460L (Y-AXIS)			DRAWING No: 3M14A0314776			
			Sheet No: No. of Sheets:			

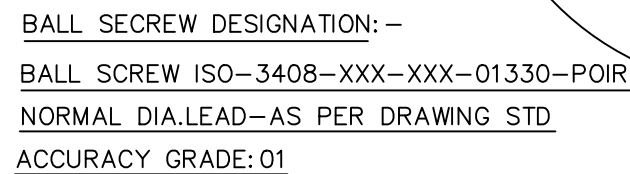
FOR TENDERING PURPOSE ONLY

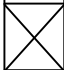
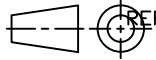

CAUTION: THIS DRAWING IS OUR SOLE PROPERTY AND SHOULD NOT BE USED IN ANY FORM FOR ANY PURPOSE WITHOUT THE WRITTEN PERMISSION OF BHARAT HEAVY ELECTRICALS LIMITED TRICHIRAPPALLI - 620 014.

ALL DIMENSIONS ARE IN MM



1	BALL SCREW NUT ø40x10 P		IS: 14872			02
1	BALL SCREW ROD ø40x10 P 570L		IS: 14872			01
No. of Pieces	DESCRIPTION	MATERIAL	STANDARD	NET.WT.IN KGS.	DRAWING No.	ITEM No.
	REFERENCE:		ALTERATIONS:	DCN REF	DATE	SIGN.
SCALE	DRN..	P.ALBET ROSS				
	CHD.	R.RAMAMOORTHY				
1:1	APP.	C.S.JAYASHEELAN				
	DATE	11-08-12				
	MACHINE: HORIZONTAL MACHINING CENTRE		TYPE: PRGARD			
	TITLE: BALL SCREW ROD		DRAWING No:			REV.
	ø40x10 Px570 L (U-AXIS)		3M14A0115102			
			Sheet No:		No. of Sheets:	

[illegible]

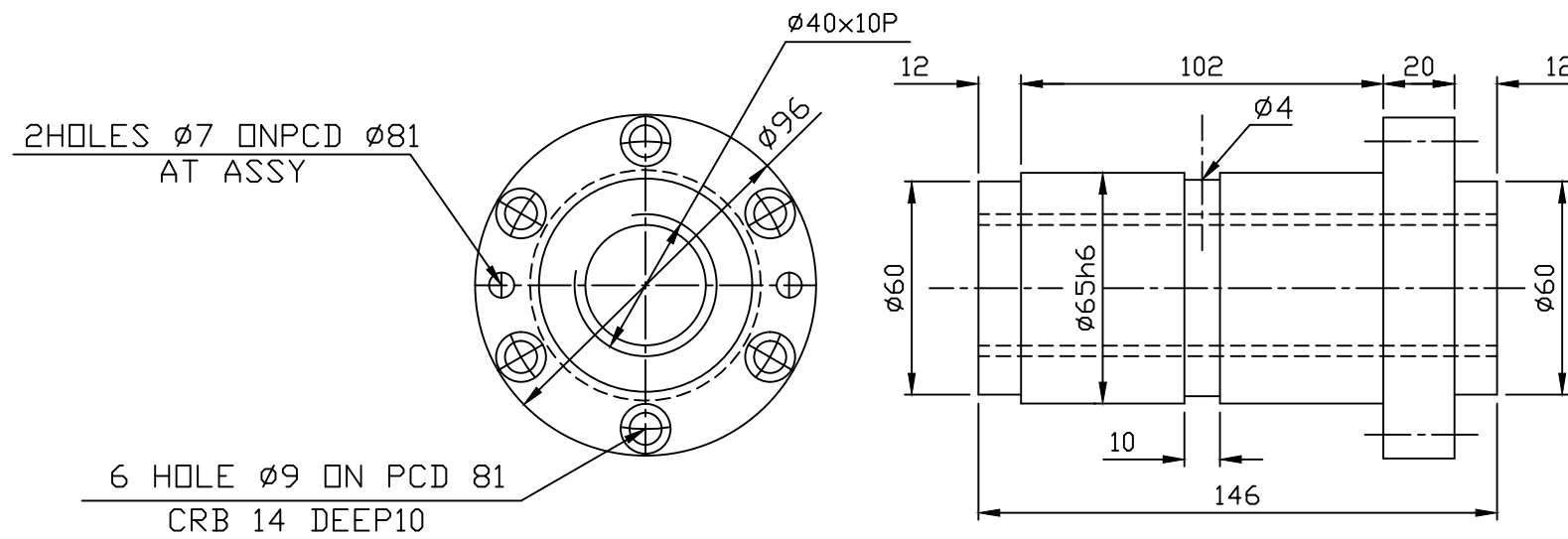
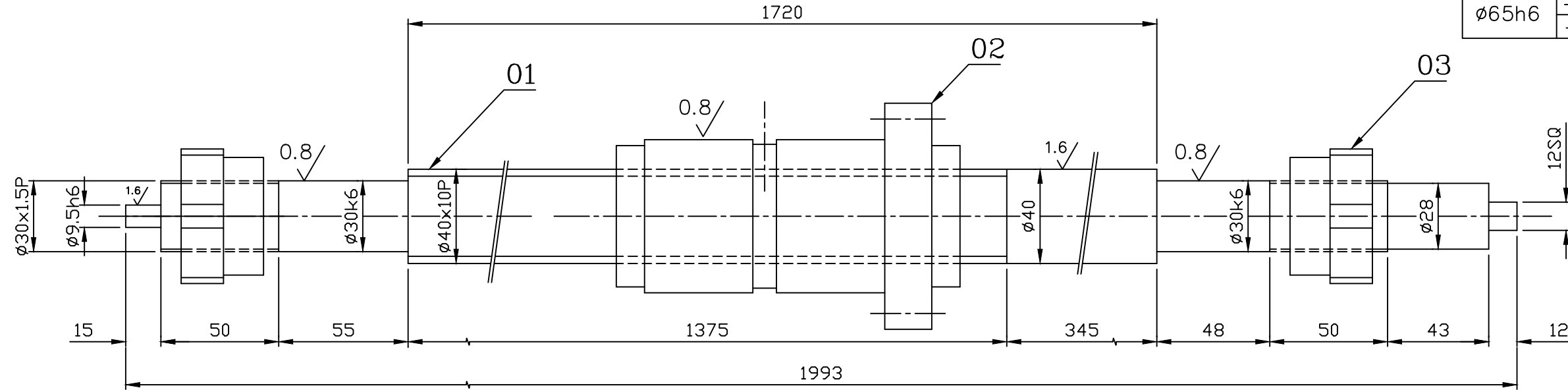
1	KEY 7x4.5tx30 L						04
1	SPACER(ø55x5t)	45 C8	IS: 7283				03
1	BALL SCREW NUT (ø40x10 P-87 L)	45 C8	IS: 7283				02
1	BALL SCREW ROD (ø40x10 P-849 L)	45 C8	IS: 7283				01
							
No. of Pieces	DESCRIPTION	MATERIAL	STANDARD	NET.WT.IN KGS.	DRAWING No.		ITEM No.
	REFERENCE:	ALTERATIONS:		DCN REF	DATE	SIGN.	INDEX
		BALL SCREW					
SCALE	DRAWN/TCD	P.A.ROSS					
1:1	CHECKED	R.RAMAMOORTHY					
	APPROVED	C.S.JAYASHEELAN					
	DATE	24-04-01/10-10-09					
MACHINE: CNC LATHE			TYPE: SB CNC 35				
TITLE:			DRAWING No:			REV.	
 BALL SCREW ø40x10Px894 L			3M08F1412047			(01)	
			Sheet No:			No. of Sheets:	

CAUTION: THIS DRAWING IS OUR SOLE PROPERTY AND SHOULD NOT BE USED IN ANY FORM FOR ANY PURPOSE WITHOUT THE WRITTEN PERMISSION OF BHARAT HEAVY ELECTRICALS LIMITED TRICHIRAPPALLI - 620 014.

ALL DIMENSIONS ARE IN MM

ø30k6	+0.015	ø9.5h6	-0.000
	+0.002		-0.009
		ø65h6	-0.000
			-0.019

1.6/0.8/



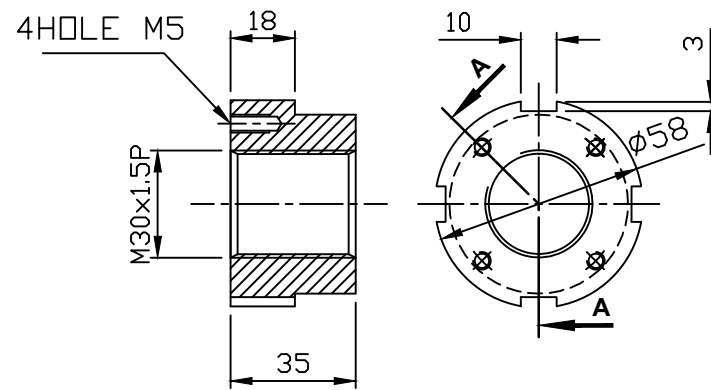
BALL SERREW DESIGNATION:-

BALL SCREW ISO-3408-XXX-XXX-01330-POIR
NOMAL DIA LEAD-AS PER DRAWING STD.
ACCURACY GRADE:01

FOR TENDERING PURPOSE ONLY.

NOTE:-CHAMFER ALL SHARP CORNERS TO 1/45°

ITEM No:-02



SECTION AA

ITEM No:-03

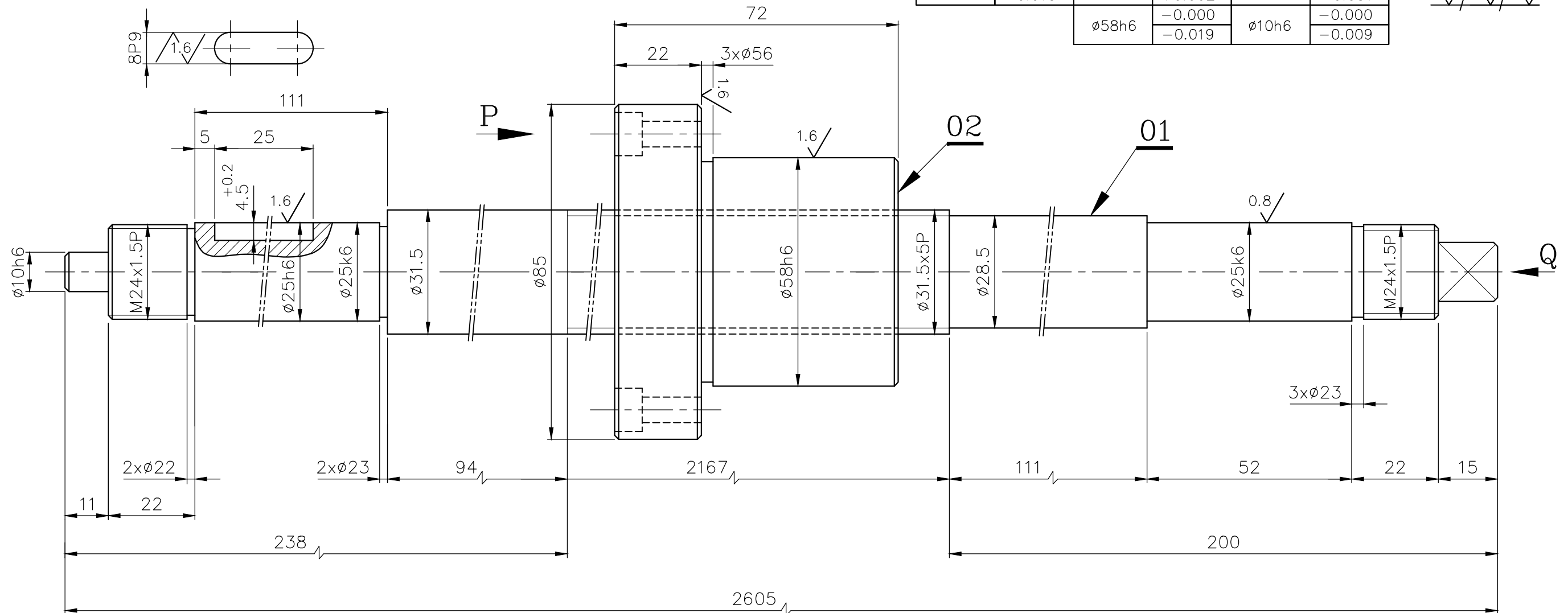
1	LOCK NUT ø30x1.5Px35L		IS: 14872			03
1	BALL SCREW NUT ø40x10Px146L		IS: 14872			02
1	BALL SCREW ROD ø40x10Px1993L		IS: 14872			01
No. of Pieces	DESCRIPTION	MATERIAL	STANDARD	NET.WT.IN KGS.	DRAWING No.	ITEM No.
	REFERENCE:		ALTERATIONS:	DCN REF	DATE	SIGN.
SCALE	DRAWN/TCO (TTB)		MOUNTING PL&MATL.			
1:2	CHECKED R.RAMAMOORTHY		SPECN.ADDED			
	APPROVED C.S.JAYASHEELAN					
	DATE 05.12.09					
MACHINE: CNC SLANT BED LATHE			TYPE: HMT-STC 25			
TITLE: BALL SCREW ROD ø40x10P (Z AXIS)			DRAWING No:			REV.
			3M08F1214032			
			Sheet No:			No. of Sheets:

THIS DRAWING IS OUR SOLE PROPERTY AND SHOULD NOT BE USED IN ANY FORM FOR ANY PURPOSE WITHOUT THE WRITTEN PERMISSION OF BHARAT HEAVY ELECTRICALS LIMITED

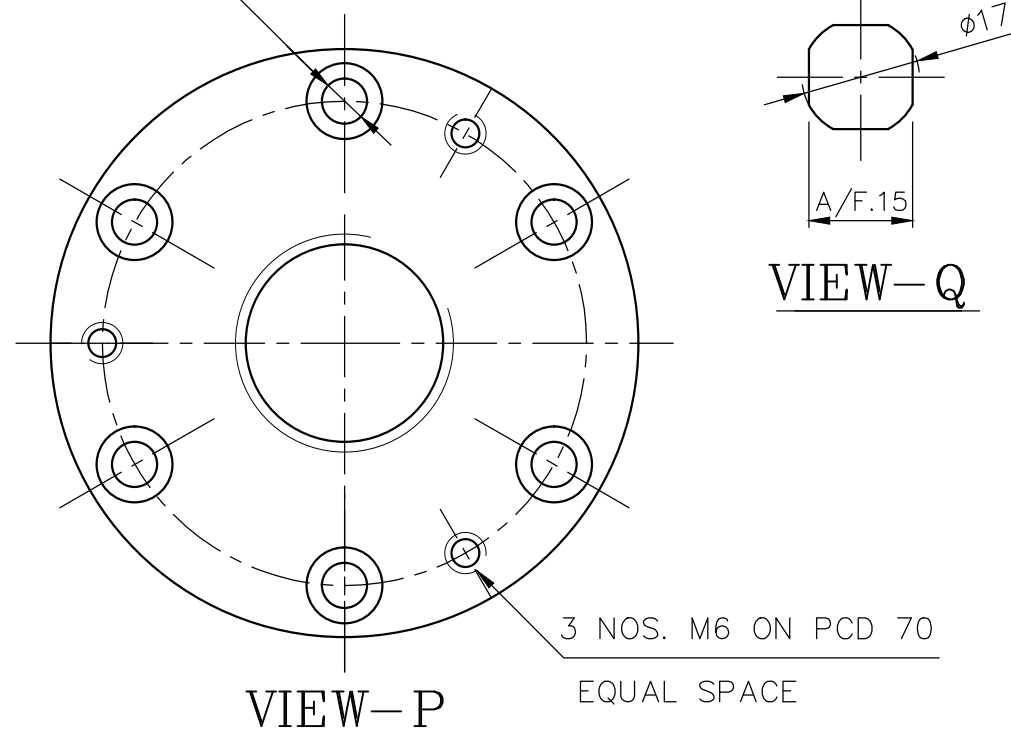
ALL DIMENSIONS ARE IN MM

ø25h6	-0.000	ø25k6	+0.015	8P9	-0.015
	-0.013		+0.002		-0.051
		ø58h6	-0.000	ø10h6	-0.000
			-0.019		-0.009

3.2 1.6 0.8



6 HOLES $\phi 6.5$ CBR. $\phi 11-7$ DEEP
ON PCD70



FOR TENDERING PURPOSE ONLY

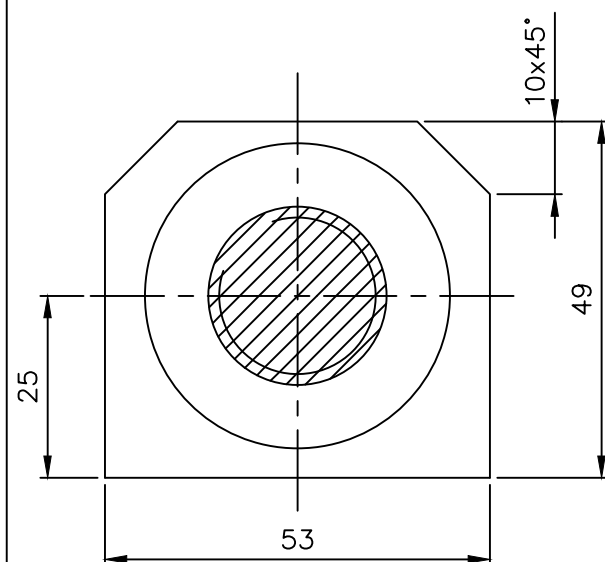
BALL SCREW DESIGNATION: –

BALL SCREW ISO-3408-XXX-XXX-01330-POIR
NORMAL DIA. LEAD-AS PER DRAWING STD
ACCURACY GRADE:1
CHAMFER CORNERS FOR 1.5/45°

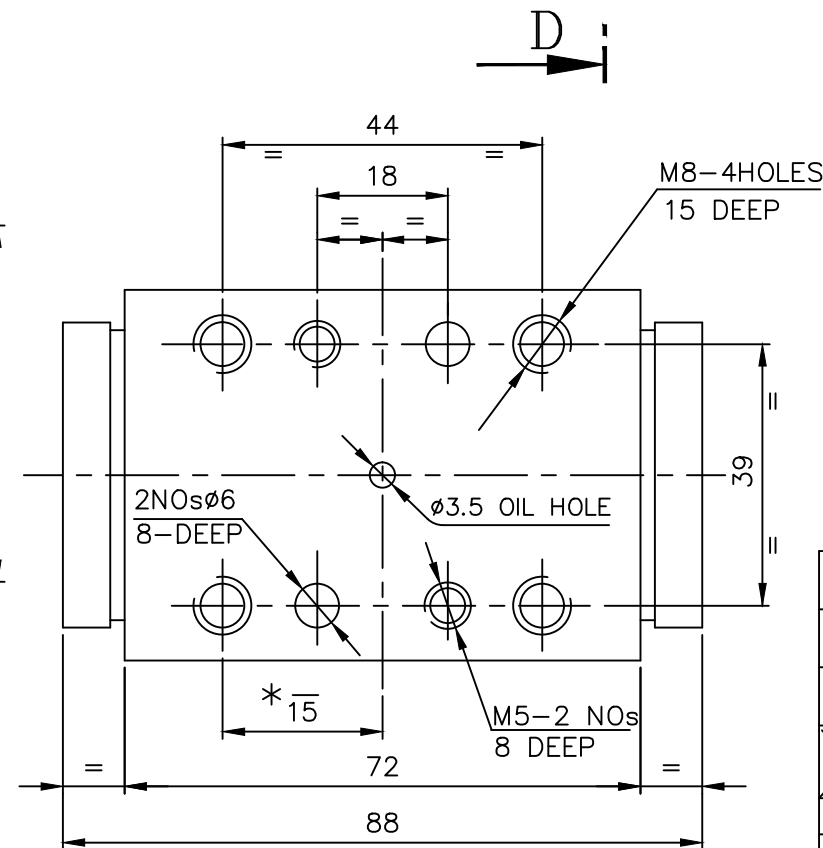
1	BALL SCREW NUTØ85x72L		IS:14872			02
1	BALL SCREW RODØ31.5X2605L		IS:14872			01
No.of Pieces	DESCRIPTION	MATERIAL	STANDARD	NET.WT.IN KGS.	DRAWING No.	ITEM No.
	REFERENCE:		ALTERATIONS:	DCN REF	DATE	SIGN.
						INDEX
SCALE	DRAWN	S.Selvamanickam				
1:1	CHECKED	R.RAMAMOORTHY				
	APPROVED	C.S.JAYASHEELAN				
	DATE	22.10.10'				
	MACHINE: TURRET LATHE		TYPE: ECONO CNC			
	TITLE:		DRAWING No:			REV.
	BALL SCREW ASSY. Ø31.5x5Px2605L		3M08D1614561			
	(LONGITUDINAL)		Sheet No:		No.of Sheets:	

CAUTION:

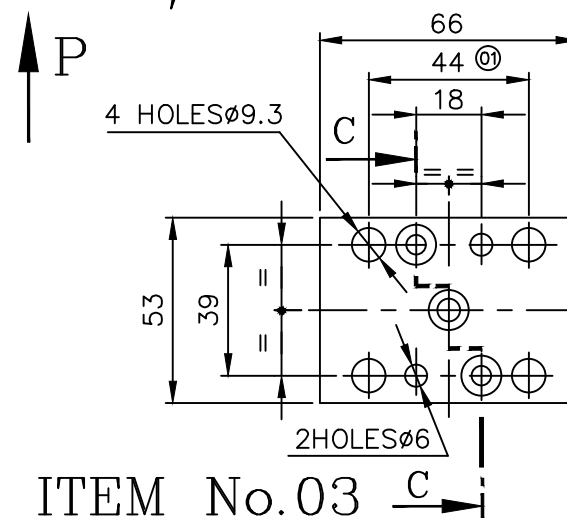
Technical drawing of a mechanical assembly (Figure 1) showing a shaft with a gear, a pulley, and a coupling. The drawing includes dimensions for diameters, lengths, and tolerances. Key features include a gear with 20 teeth and a module of 1.5, a pulley with a diameter of 24.5, and a coupling with a diameter of 18. The assembly is labeled with 01, 02, and 03.



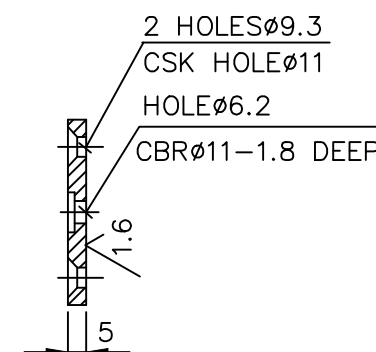
SECTION-DD



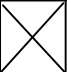
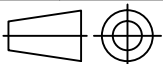

VIEW-P



ITEM No.03



SECTION-CC

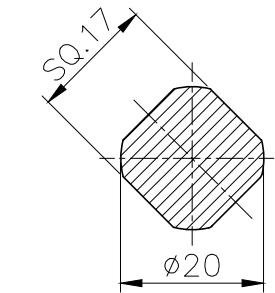
1	DISTANCE PLATE 5tX53X66	Fe.410 WA	IS: 2062				03
1	BALL SCREW NUT Ø24.5X5P×88L		IS: 14872				02
1	BALL SCREW ROD Ø24.5X5P-662L		IS: 14872				01
							
No. of Pieces	DESCRIPTION	MATERIAL	STANDARD	NET.WT.IN KGS.	DRAWING No.	ITEM No.	
	REFERENCE:	ALTERATIONS:		DCN REF	DATE	SIGN.	INDEX
SCALE	DRAWN	P.A.ROSS	DIMN.44 WAS 55		26/11/10	CSJ	①
1:1	CHECKED	R.RAMAMOORTHY					
1:2	APPROVED	C.S.JAYASHEELAN					
	DATE	17-06-09					
MACHINE: TURRET LATHE			TYPE: ECONO CNC				
TITLE: BALL SCREW ASSY (Ø24.5X5P-662L) (CROSS SLIDE ASSY.)			DRAWING No:				
			3M08D161390701				
			Sheet No:				
			No. of Sheets:				

CAUTION:- THIS DRAWING IS OUR SOLE PROPERTY AND SHOULD NOT BE USED IN ANY FORM FOR ANY PURPOSE WITHOUT THE WRITTEN PERMISSION OF BHARAT HEAVY ELECTRICALS LIMITED TRICHIRAPPALLI - 620 014.

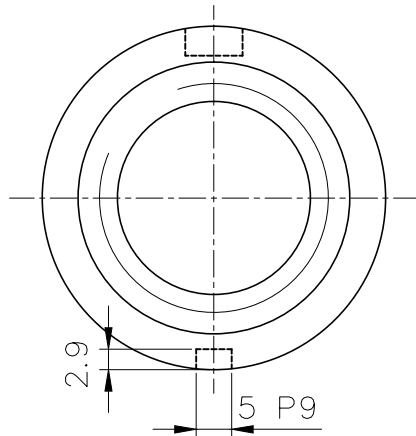
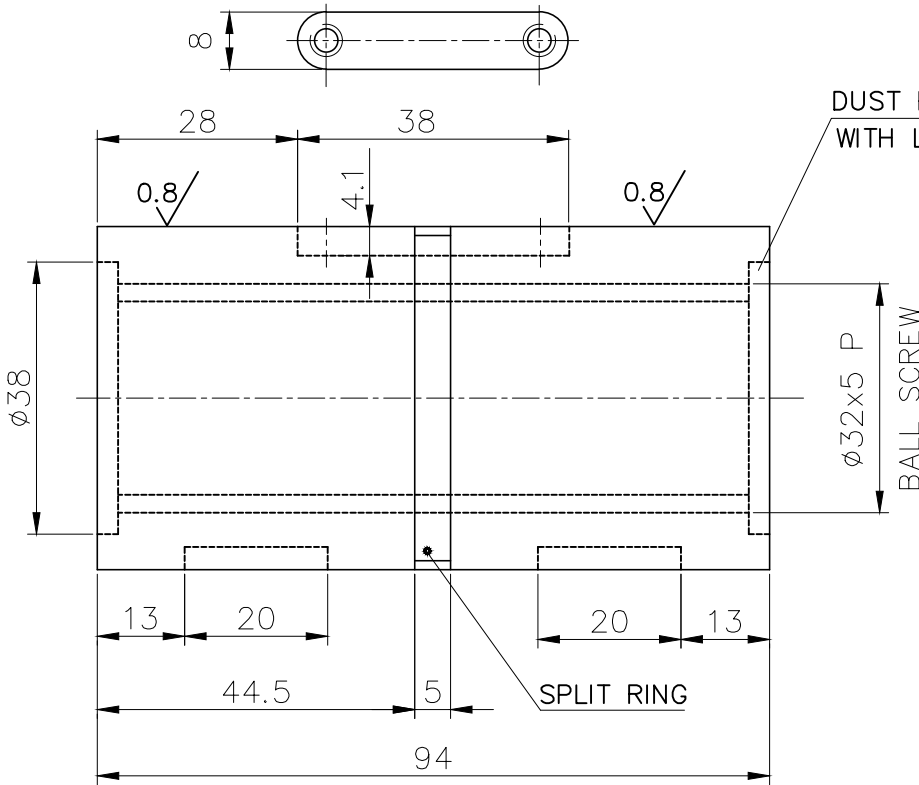
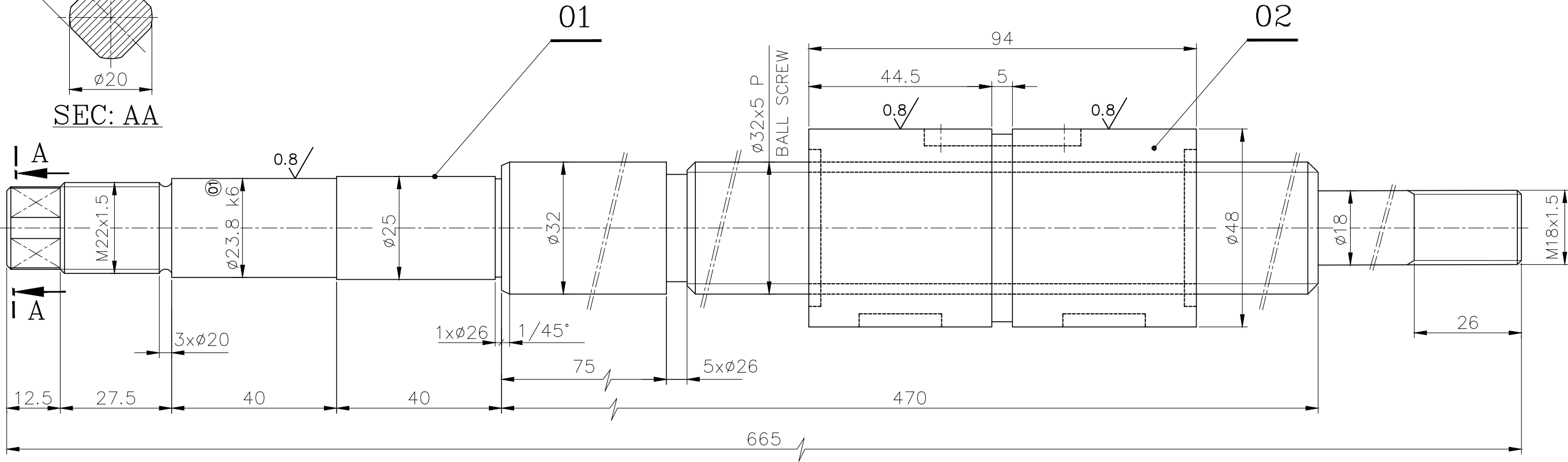
ALL DIMENSIONS ARE IN MM

ø23.8 k6	+0.015
	+0.002

1.6/0.8



SEC: AA



FOR TENDERING PURPOSE ONLY

BALL SCREW DESIGNATION: -

BALL SCREW ISO-3408-XXX-XXX-01330-POIR

NORMAL DIA.LEAD-AS PER DRAWING STD

ACCURACY GRADE: 01

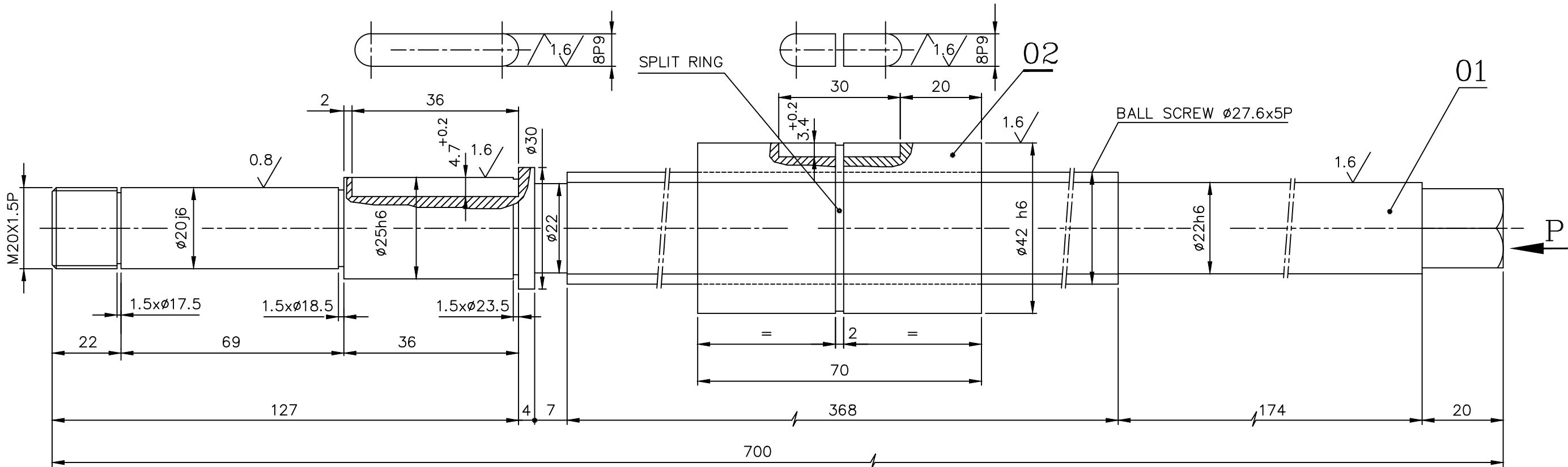
ALL CORNERS TO BE CHAMFERED TO 1/45°

1	BALL SCREW NUT ø32x5 Px94L		IS:14872			02
1	BALL SCREW ROD ø32x5 Px665L		IS:14872			01
No.of Pieces	DESCRIPTION		MATERIAL	STANDARD	NET.WT.IN KGS.	DRAWING No.
	REFERENCE:		ALTERATIONS:		DCN REF	DATE
SCALE	DRN.	P.ALBET ROSS	DIA 23.8 k6 WAS DIA 24		26.04.13	K.R
1:1	CHD.	R.RAMAMOORTHY				
	APP.	C.S.JAYASHEELAN				
	DATE	11-08-12				
MACHINE: HORIZONTAL BORING & DRILLING				TYPE: UTX 160/HB 633		
TITLE: BALL SCREW ROD				DRAWING No:		
ø32x5 Px665 L				3M01B261496001		
(U-AXIS)				REV.		
				Sheet No:		
				No.of Sheets:		

CAUTION:

ALL DIMENSIONS ARE IN MM

8P9	-0.015	ø22h6	-0.000
	-0.051	ø25h6	-0.013
ø42 h6	-0.000	ø20j6	+0.009
	-0.016		-0.004



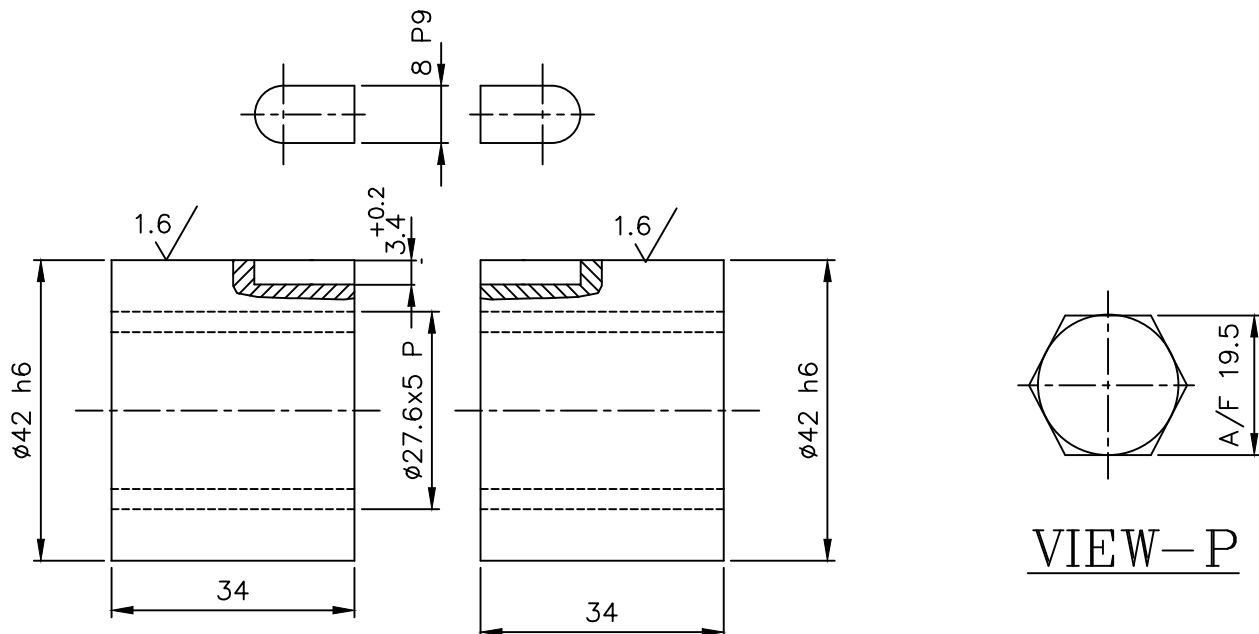
BALL SCREW DESIGNATION: –

BALL SCREW ISO-3408-XXX-XXX-01330-POIR

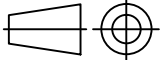

NOMINAL DIA LEAD - AS PER DRAWING STD

ACCURACY GRADE: 01

FOR TENDERING PURPOSE ONLY



ITEM No.02

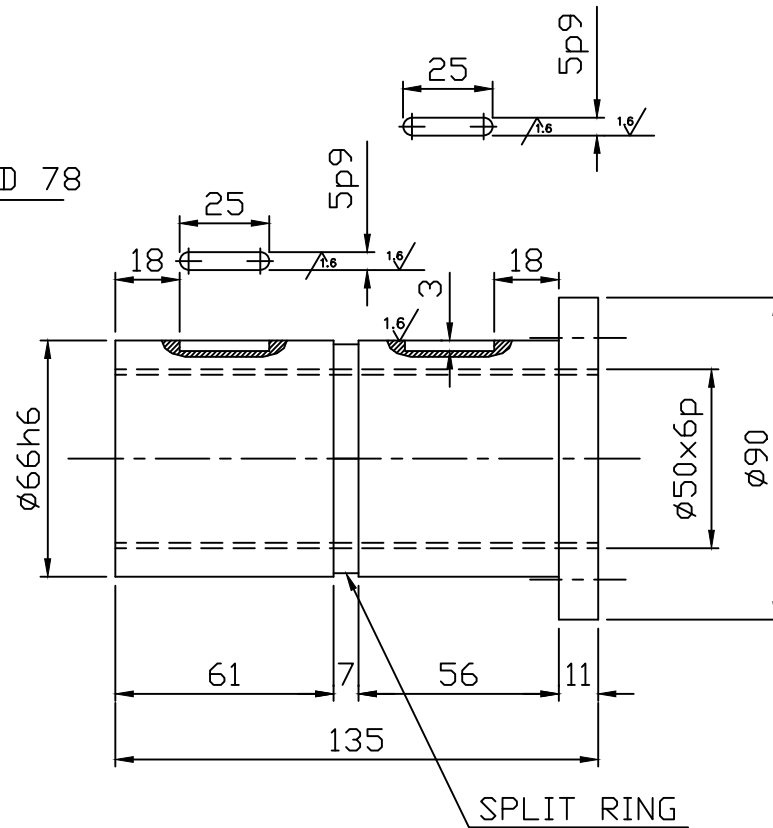
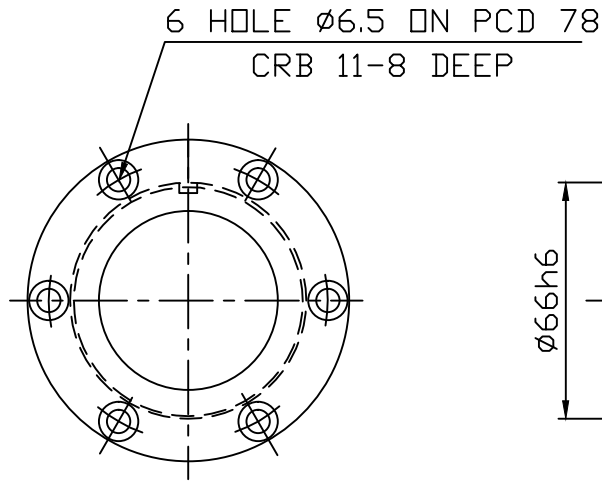
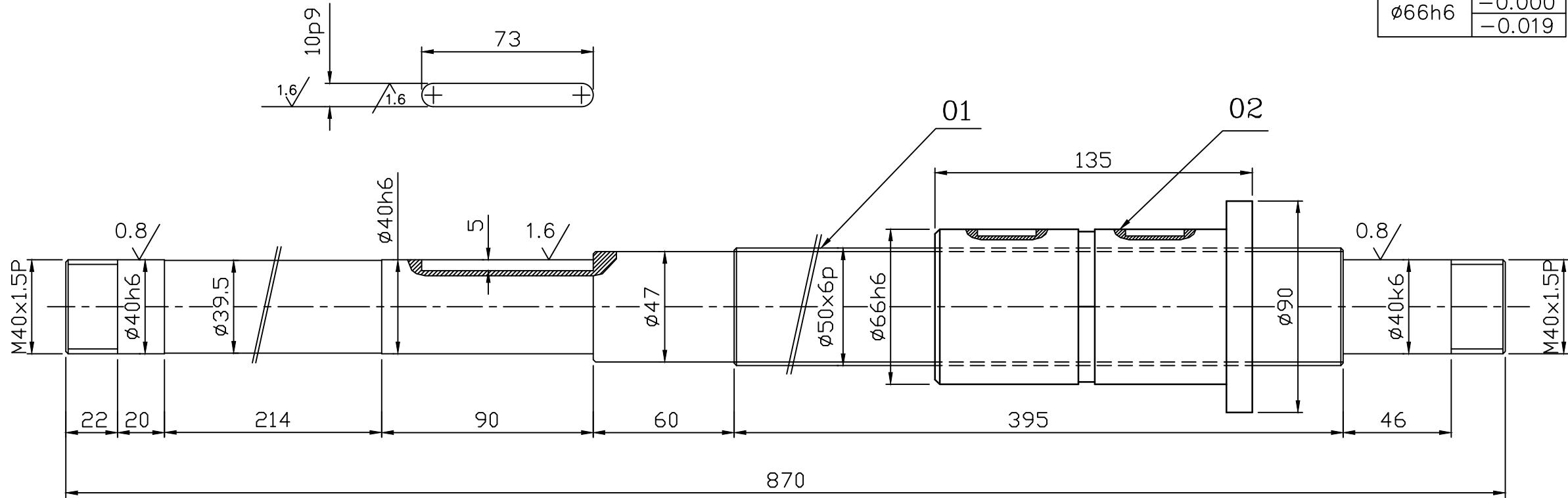
02	BALL SCREW NUT $\varnothing 27.6 \times 5P-34L$		IS:14872			02
01	BALL SCREW ROD $\varnothing 27.6 \times 5P \times 700L$		IS:14872			01
No.of Pieces	DESCRIPTION	MATERIAL	STANDARD	NET.WT.IN KGS.	DRAWING No.	ITEM No.
	REFERENCE: LOC.NO.4807 2935	ALTERATIONS:	DCN REF	DATE	SIGN.	INDEX
SCALE	DRAWN	PA.ROSS				
1:1	CHECKED	R.RAMAMOORTHY				
	APPROVED	C.S.JAYASHEELAN				
	DATE	05-02-10				
MACHINE: HORIZONTAL BORING			TYPE: SACEM-MSMG-125			
 TITLE: BALL SCREW ASSY. $\varnothing 27.6 \times 5P \times 700L$ (FACE PLATE ASSY.)			DRAWING No:			REV.
			3M01B2014065			
			Sheet No:			No.of Sheets:

CAUTION: THIS DRAWING IS OUR SOLE PROPERTY AND SHOULD NOT BE USED IN ANY FORM FOR ANY PURPOSE WITHOUT THE WRITTEN PERMISSION OF BHARAT HEAVY ELECTRICALS LIMITED TRICHIRAPPALLI - 620 014.

ALL DIMENSIONS ARE IN MM

ø40k6	+0.018	ø40h6	-0.000
	+0.002		-0.016
ø66h6		ø66h6	-0.000
			-0.019

1.6/0.8/



ITEM No: -02

BALL SEREW DESIGNATION:-

BALL SCREW ISO-3408-XXX-XXX-01330-POIR
NOMAL DIA LEAD-AS PER DRAWING STD.
ACCURACY GRADE:01

FOR TENDERING PURPOSE ONLY.

NOTE:-CHAMFER ALL SHARP CORNERS TO 1/45°

1	BALL SCREW NUT ø50x6Px135L		IS: 14872			02
1	BALL SCREW ROD ø50x6Px870L		IS: 14872			01
No.of Pieces	DESCRIPTION	MATERIAL	STANDARD	NET.WT.IN KGS.	DRAWING No.	ITEM No.
	REFERENCE		ALTERATIONS	DCN REF	DATE	SIGN.
SCALE	DRAWN/TCB	(TTB)	MOUNTING PL&MATL.			
1: 2	CHECKED	R.RAMAMOORTHY	SPECN.ADDED			
	APPROVED	C.S.JAYASHEELAN				
	DATE	16.11.09				
MACHINE: EDGE PLANNING			TYPE: BNF 130			
TITLE: BALL SCREW ROD ø50x6P (FACE PLATE ASSY)			DRAWING No: 3M01B1414014			
			Sheet No: No.of Sheets:			