

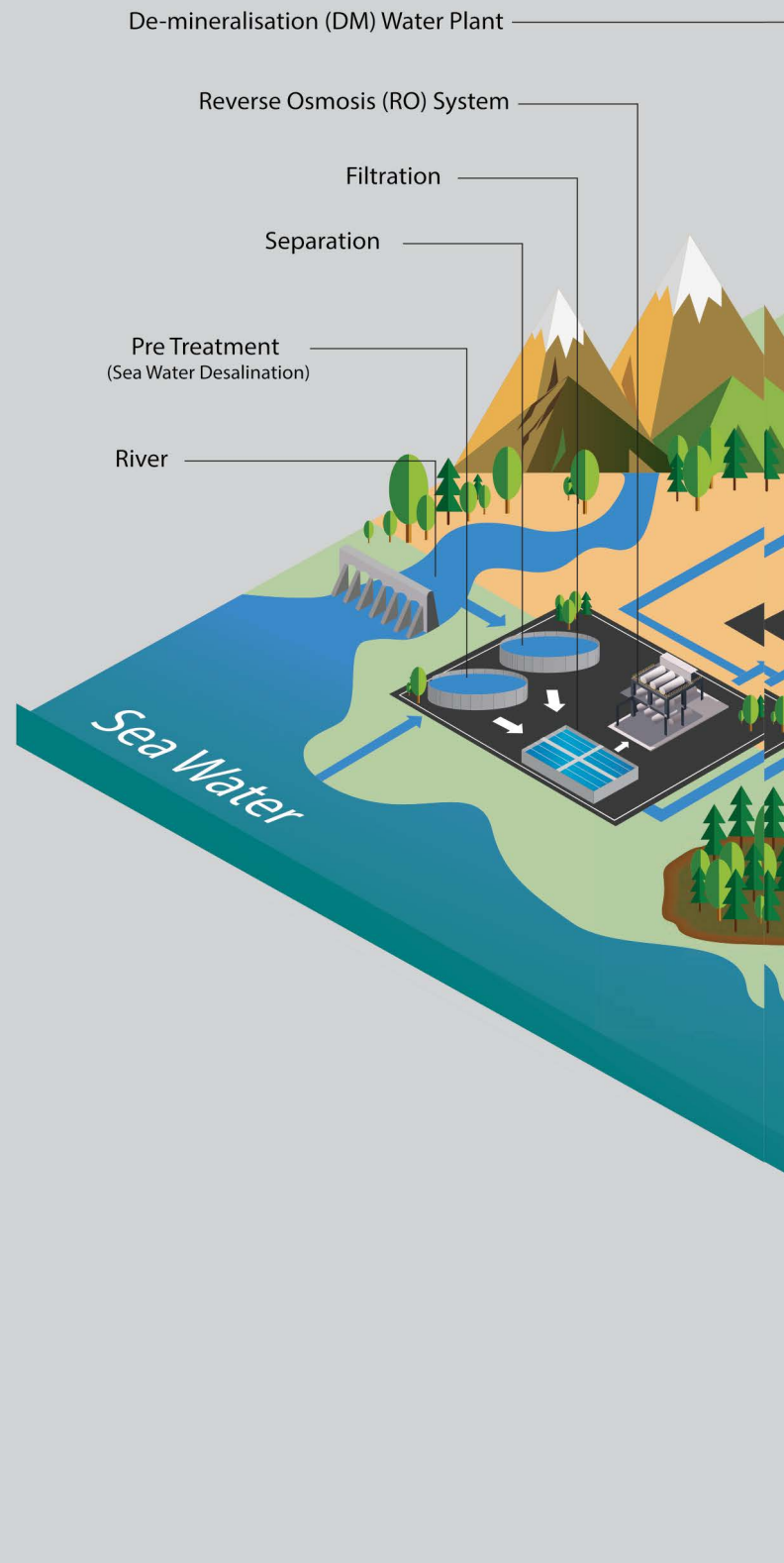


**Purifying Water
Transforming Life**

About BHEL

BHEL is India's largest engineering and manufacturing enterprise in the energy and infrastructure sectors. Established in 1964, we are a leading power equipment manufacturer globally and one of the earliest and leading contributors towards building an Aatmanirbhar Bharat. We serve our customers with a comprehensive portfolio of products, systems and services to its customers in the areas of power-thermal, hydro, gas, nuclear & solar PV, transmission, transportation, defence & aerospace, oil & gas, and water.

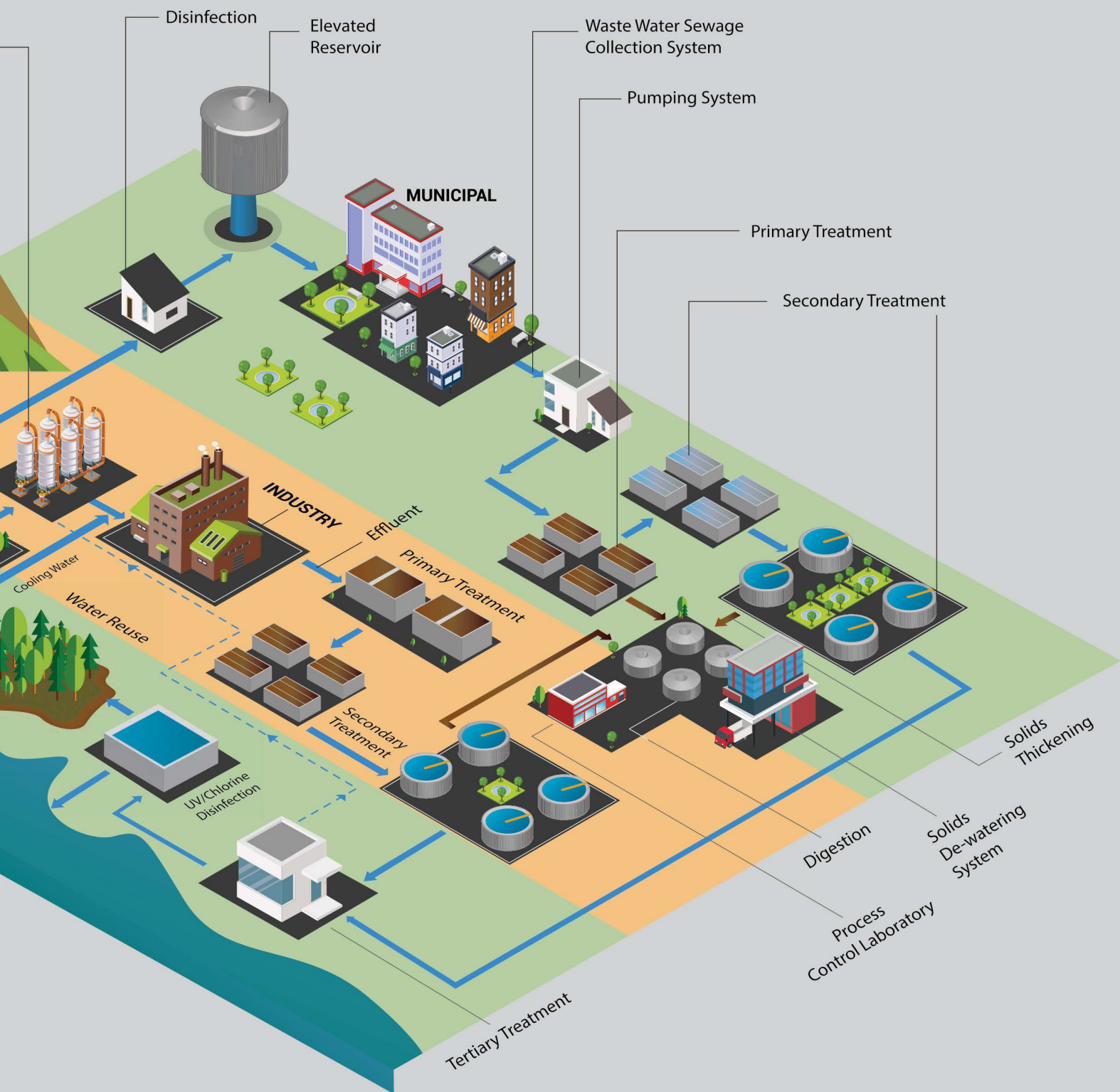
Right from developing country's power generation capacity to creating multiple capabilities in country's core industrial & strategic sectors, BHEL is deeply aligned to the vision of a self-reliant India.



96_{MLD}

one of the largest ultra-filtration plants in India

commissioned by BHEL at OPaL-Dahej Petrochemical Complex, Gujarat



BHEL is leveraging on its technological capabilities and committed workforce to transform itself. Asserting leadership in core business, diversifying the business mix, cost optimisation, efficiency optimisation & innovative technological solutions are the major enablers driving company's competitiveness in its businesses.

Complete Water Management Solutions

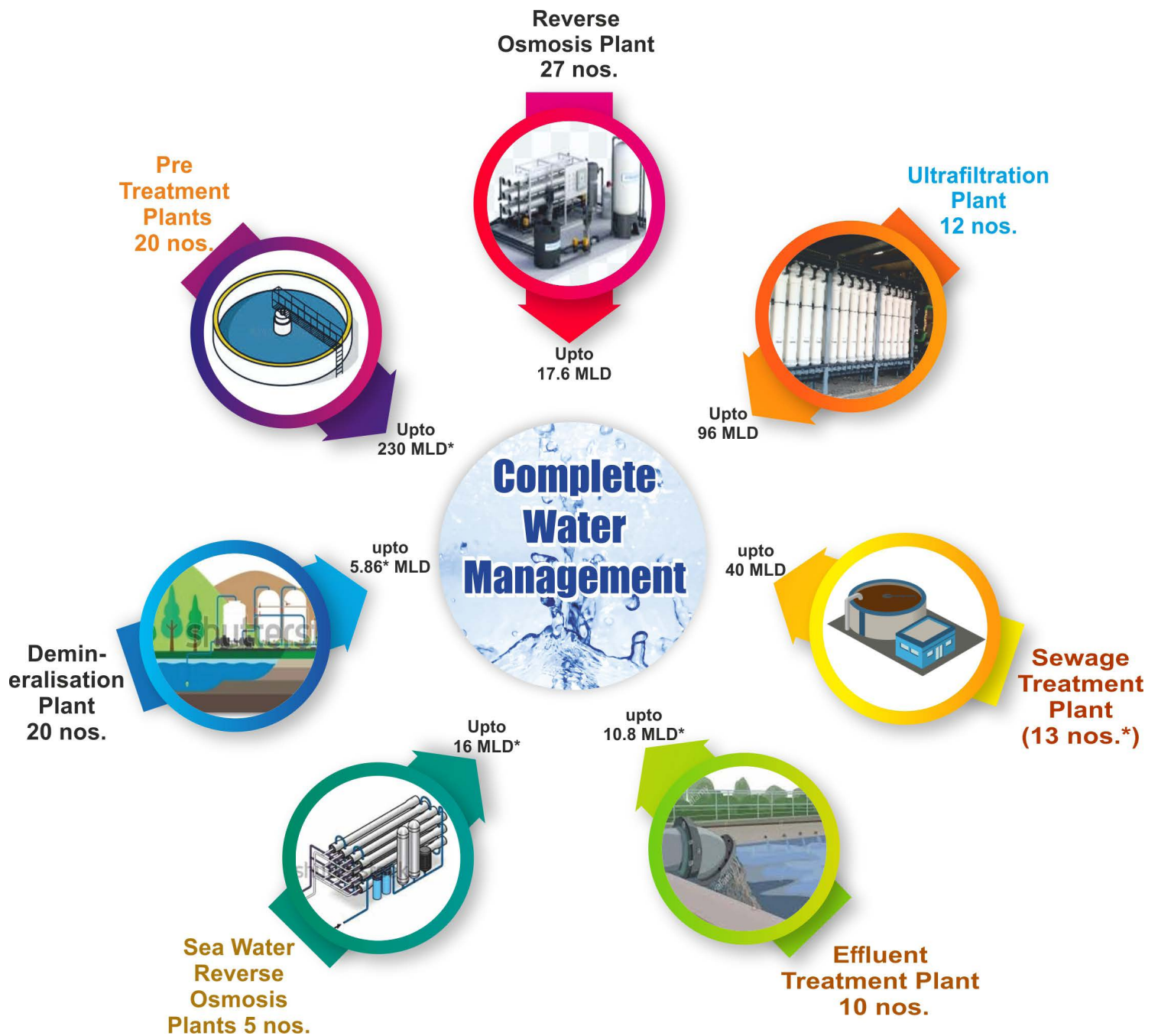
Water management is one of our focus business areas. BHEL has been in the field of water treatment since the nineties. The first 'one million gallons per day' capacity Sea Water Reverse Osmosis (SWRO) desalination plant in India for public utility needs was put up by BHEL at Narippaiyur, (Ramanthapuram district, Tamil Nadu) in 1999. Having over two decades of experience in treating water from various sources viz. sea, river, bore-well, industrial effluents and sewage, we offer environment-friendly solutions for both industrial and municipal segment. A dedicated Pollution Control Research Institute (PCRI) undertakes performance evaluation of different treatment plants, assessment of water/effluent/sewage characteristics, environmental audits, etc.



Activated Sludge Process (ASP) based STP at Chennai



Reverse Osmosis (RO) System at Yeramarus TPP



*Under execution



Owned and Maintained 54 MLD Water Treatment Plant(WTP) for more 60 years at BHEL Bhopal Unit

Concept to Commissioning and Beyond...

Practicing the philosophy of concept to commissioning and beyond, our endeavour is to provide customer-oriented cost effective solutions and services for:

- Process Water Treatment for Industrial Applications
- Potable Water Solutions
- Water Supply and Distribution Management
- Desalination System
- Effluent Treatment Plant (ETP)
- Sewage Treatment Plant (STP)
- Sewage Collection and Pumping Station
- Zero Liquid Discharge System
- Environmental friendly Solutions for lake purification



Industrial and Process Solutions

BHEL, with its rich experience in power sector, has unique expertise in understanding the intricacies of the water quality for varied industrial and process requirements.



Raw Water Treatment Plant at OPaL-Dahej

We offer total turnkey solutions for the following systems:

- Pre-treatment Plant
- De-mineralisation (DM) Water Plant
- Desalination Plant
- Effluent Treatment Plant
- Cooling Water (CW) Treatment
- Zero Liquid Discharge (ZLD) Systems for Industries
- Other Membrane based solutions



Raw water reservoir at Bellary, TPS

Municipal Solutions

Leveraging the competencies developed over two decades, BHEL offers complete Water Management Solutions from water supply & distribution management to waste-water treatment and its reuse.



Phytorid Based Eco-friendly Lake purification at Telibandha, Raipur, Chhattisgarh

Major References

- 3.8 MLD Sea Water Reverse Osmosis Plant (SWRO) for Potable applications at Narippaiyur for Tamil Nadu Water Supply and Drainage Board (TWAD)
- 40 MLD Sewage Treatment Plant (STP) based on Activated Sludge Technology for Chennai Metropolitan Water Supply and Sewerage Board (CMWSSB)
- 1.5 MLD Phytorid based Sewage Treatment Plant (Telibandha lake purification) for Raipur Smart City Limited (RSCL)
- 25.42 MLD* Decentralized Sewage Treatment Plant based on Sequential Batch Reactor (SBR) technology for Raipur Development Authority (RDA) *Under execution
- Set up 7 MLD STP based on Sequential Based Reactor (SBR) and 8 MLD STP based on Membrane Bio Reactor(MBR) Technology at BHEL Units



Membrane Bio-Reactor (MBR) based STP at BHEL Hyderabad



Advantage BHEL

- Over two decades of rich experience in process design, equipment selection, installation and commissioning of Water Treatment Plants
- Offers turnkey solutions to all segments of water management right from potable water applications to DM water make-up and domestic sewage treatment - One Stop Solution Provider



BHARAT HEAVY ELECTRICALS LIMITED

Registered Office : BHEL House, Siri Fort, New Delhi-110049, India
Corporate Identity Number : L74899DL 1964GOI004281

Marketing Office : Industry Sector, Integrated Office Complex, Lodhi Road,
New Delhi-110003, India, Tel No.: 011-41793243/149/384, E-mail : water@bhel.in

www.bhel.com

Follow us on



BHELOfficial



BHEL_India



BHEL_India



BHEL.India



company/BHEL