

NOTE
SHALL BE FINALIZED BASED ON VENDOR INFORMATION

NOTE A001
MOTOR PID ARE NOT SHOWN.

NOTE A004
TO PREVENT NONFUNCTIONING OF SLURRY TANK PUMP SUCTION VALVE DUE TO SOLID SEDIMENTATION, THE SHAFT OF BUTTERFLY VALVE SHOULD BE INSTALLED HORIZONTALLY AND UPPER HALF OF THE DISC SHOULD BE TURN INTO TANK INSIDE. SUCTION VALVES SHALL BE MOUNTED ON NOZZLE DIRECTLY AS LONG AS ACTUATOR DOES NOT COLLIDE WITH TANK CASING.

NOTE A006
DISCHARGE OF DRAIN AND OVERFLOW LINE SHALL HAVE 45 DEG INCLINATION TOWARD FLOW DIRECTION OF TRENCH FOR SMOOTH FLOW.

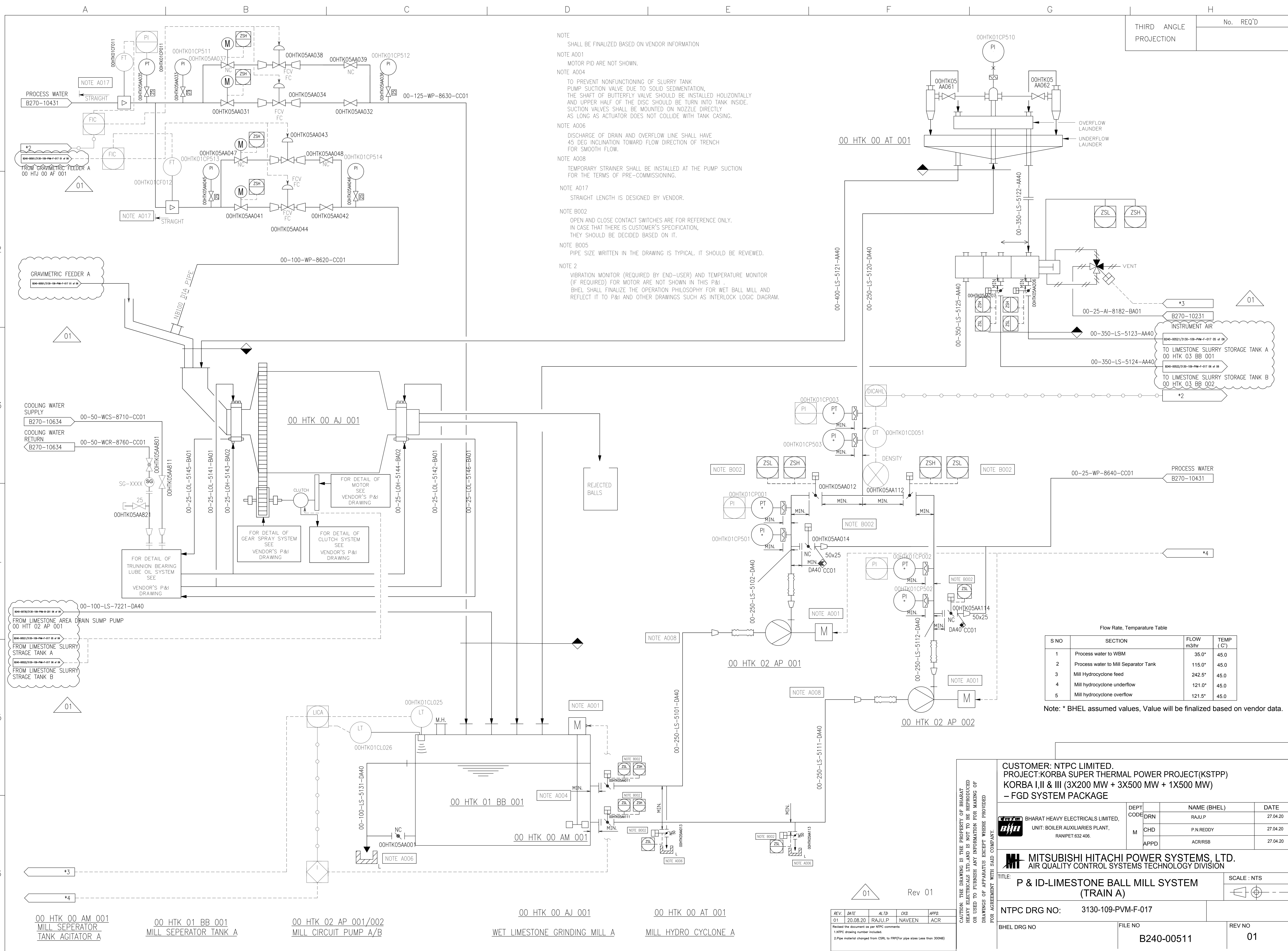
NOTE A008
TEMPORARY STRAINER SHALL BE INSTALLED AT THE PUMP SUCTION FOR THE TERMS OF PRE-COMMISSIONING.

NOTE A017
STRAIGHT LENGTH IS DESIGNED BY VENDOR.

NOTE B002
OPEN AND CLOSE CONTACT SWITCHES ARE FOR REFERENCE ONLY. IN CASE THAT THERE IS CUSTOMER'S SPECIFICATION, THEY SHOULD BE DECIDED BASED ON IT.

NOTE B005
PIPE SIZE WRITTEN IN THE DRAWING IS TYPICAL, IT SHOULD BE REVIEWED.

NOTE 2
VIBRATION MONITOR (REQUIRED BY END-USER) AND TEMPERATURE MONITOR (IF REQUIRED) FOR MOTOR ARE NOT SHOWN IN THIS P&I. BHEL SHALL FINALIZE THE OPERATION PHILOSOPHY FOR WET BALL MILL AND REFLECT IT TO P&I AND OTHER DRAWINGS SUCH AS INTERLOCK LOGIC DIAGRAM.



Flow Rate, Temperature Table

S NO	SECTION	FLOW m3/hr	TEMP (C)
1	Process water to WBM	35.0*	45.0
2	Process water to Mill Separator Tank	115.0*	45.0
3	Mill Hydrocyclone feed	242.5*	45.0
4	Mill hydrocyclone underflow	121.0*	45.0
5	Mill hydrocyclone overflow	121.5*	45.0

Note: * BHEL assumed values, Value will be finalized based on vendor data.

CUSTOMER: NTPC LIMITED.
PROJECT: KORBA SUPER THERMAL POWER PROJECT (KSTPP)
KORBA I, II & III (3X200 MW + 3X500 MW + 1X500 MW)
- FGD SYSTEM PACKAGE

DEPT	NAME (BHEL)	DATE
DRN	RAJU, P	27.04.20
M	P.N. REDDY	27.04.20
APPD	ACR/RSB	27.04.20

MITSUBISHI HITACHI POWER SYSTEMS, LTD.
 AIR QUALITY CONTROL SYSTEMS TECHNOLOGY DIVISION

TITLE: **P & ID-LIMESTONE BALL MILL SYSTEM (TRAIN A)** SCALE: NTS

NTPC DRG NO: 3130-109-PVM-F-017

BHEL DRG NO	FILE NO	REV NO
	B240-00511	01

Rev 01

REV.	DATE	ALTD	CHK	APPD
01	20.08.20	RAJU, P	NAVEEN	ACR

1. NTPC drawing number included.
 2. Pipe material changed from CSRL to FRP for pipe sizes less than 300mm.

